



SOUTH ELEMENTARY SCHOOL

Photo Tour for Town Meeting
May 3, 2021



SOUTH ELEMENTARY SCHOOL

Built in 1958, and an addition built in 1967, the South School has 20 classrooms and serves a community today of about 250 students. It is a single story building that has five levels, with the elevation difference between the highest and lowest level of nearly 12 feet.

It is on a densely wooded and sloped piece of land. The 1967 addition sits at the bottom of the slope and there are persistent drainage problems. The ramps are original to the school and are three times steeper than allowed by code..



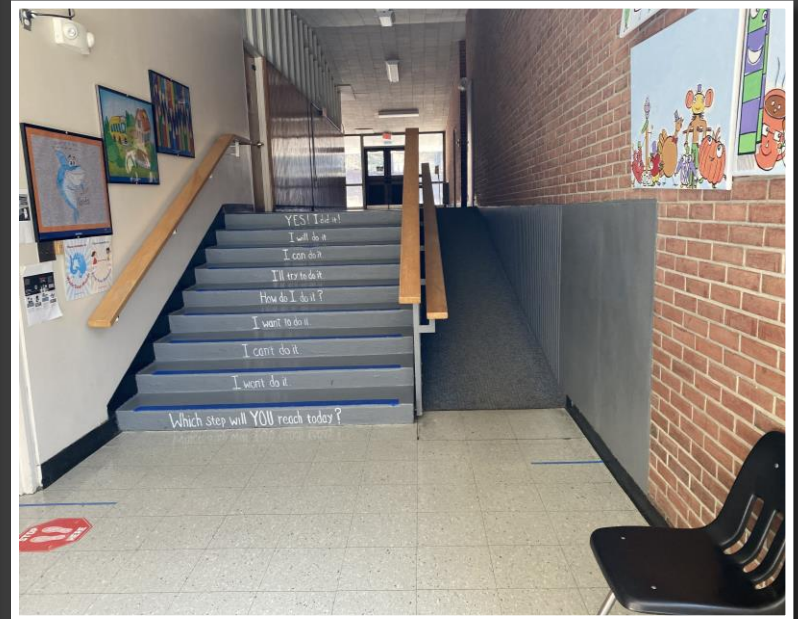
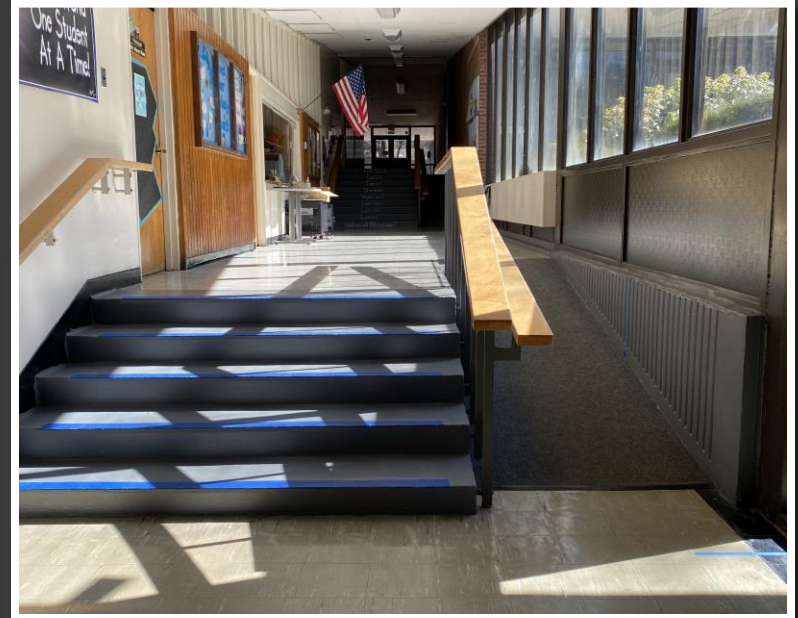
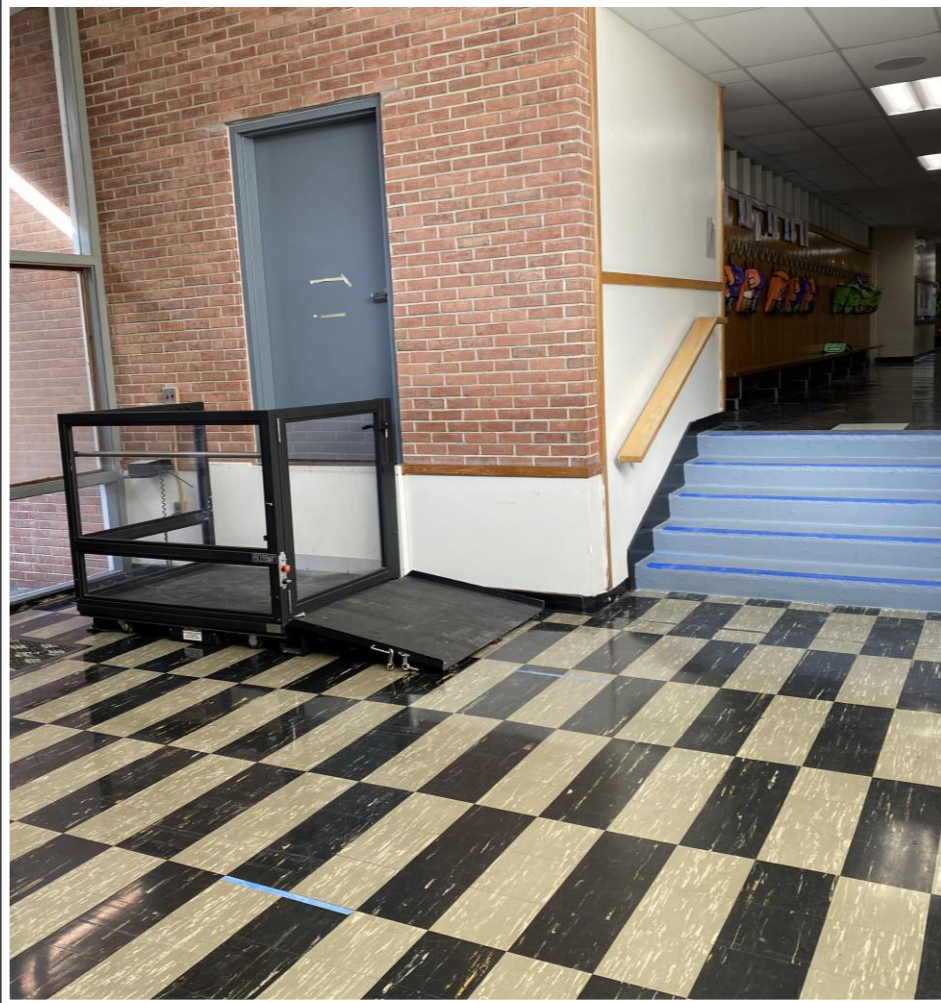
ADA ACCESSIBILITY

There are four ramps and one lift that serve the five levels of the school. The ramps range from 23% to 26%. The maximum allowable standard is 8.3%.

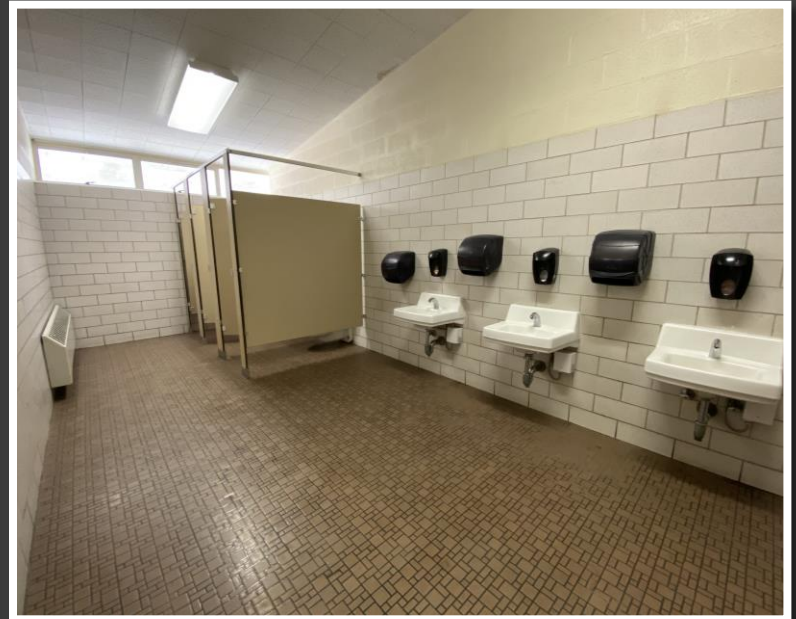
The ramps are original to the building – 32 years before ADA (Americans with Disabilities Act) was the law.

It was determined in the 1990's ADA studies that there was no solution that could fix the accessibility problems at this school.

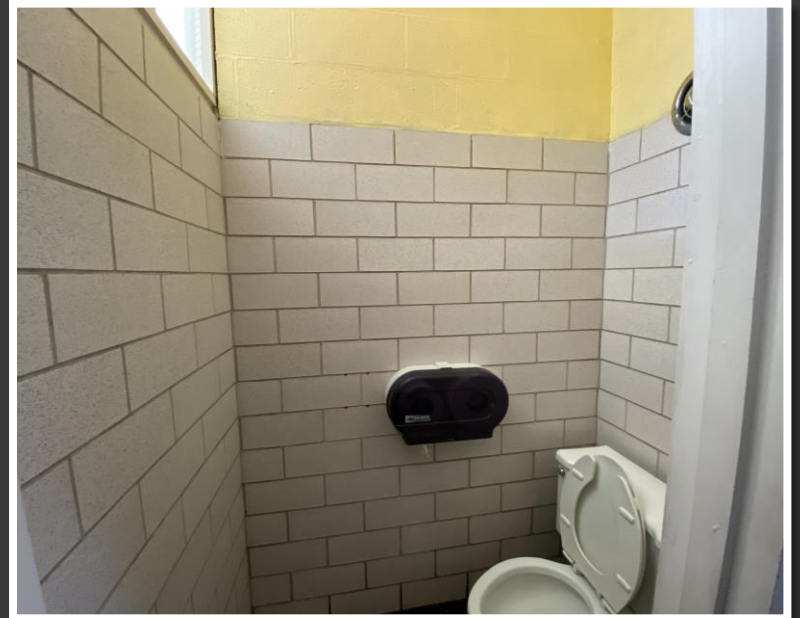
NON-COMPLIANT ADA RAMPS AND LIFT. LIFT OPENS INTO CLASSROOM



NON-ADA STUDENT RESTROOMS



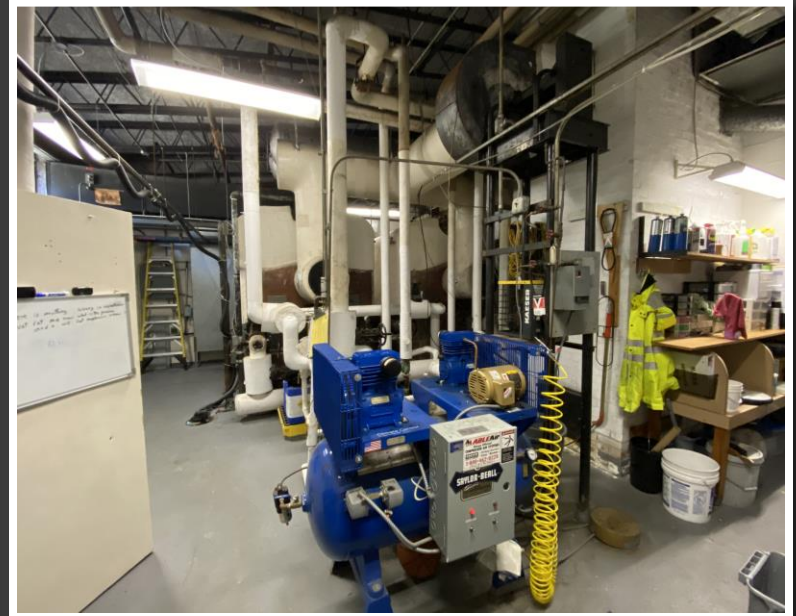
UNDERSIZED PRINCIPAL'S OFFICE, CLINIC, AND CLINIC RESTROOM



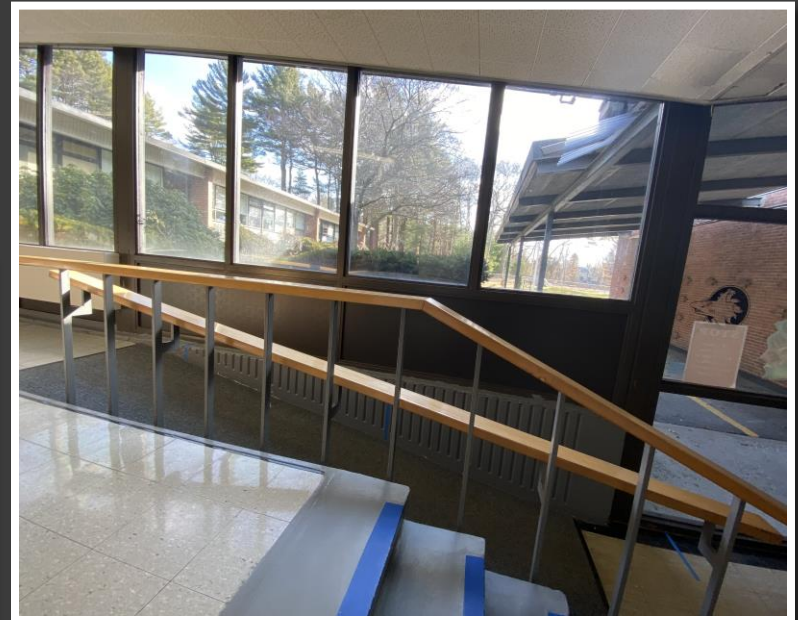
SMALL GYM, SERVER IN
CONFERENCE ROOM, AND
LIBRARY IN SMALL CLASSROOM



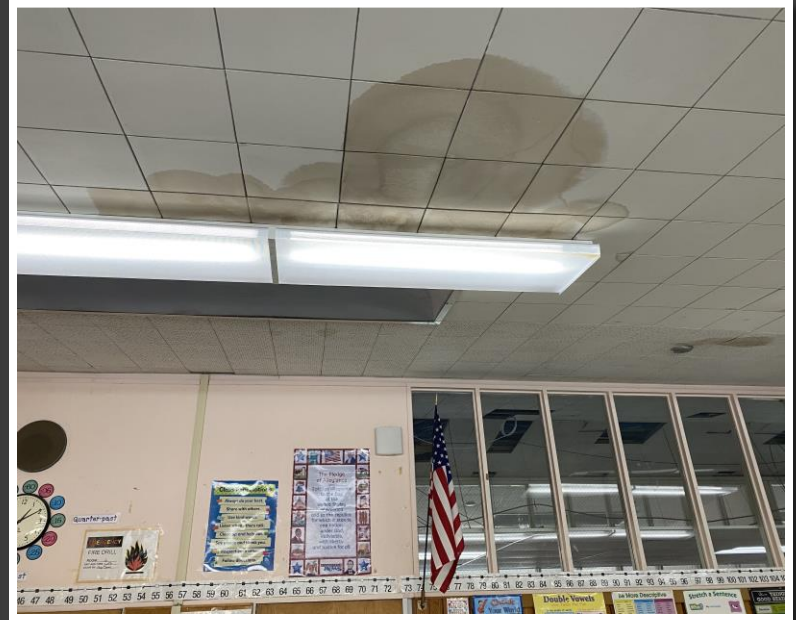
ORIGINAL 1958 BOILERS



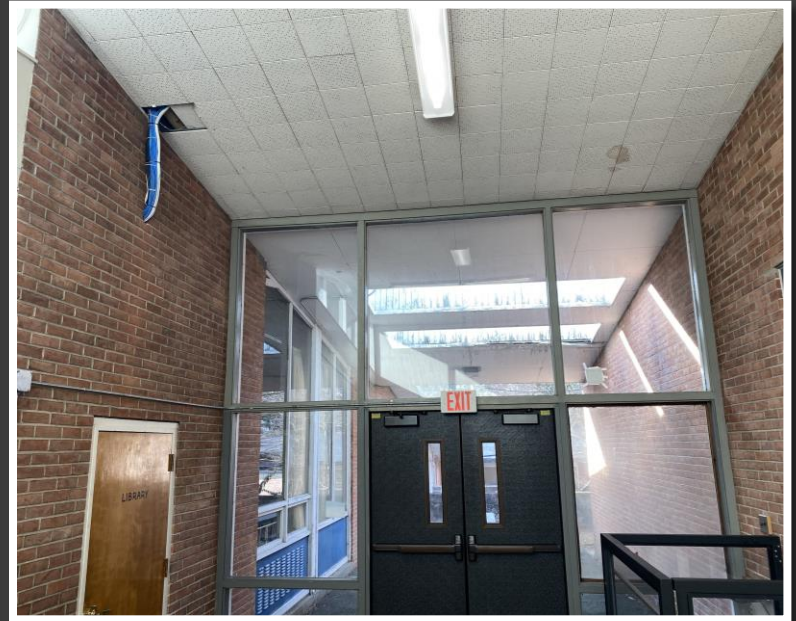
LARGE EXPANSES OF SINGLE
GLAZED GLASS – ENERGY
INEFFICIENT



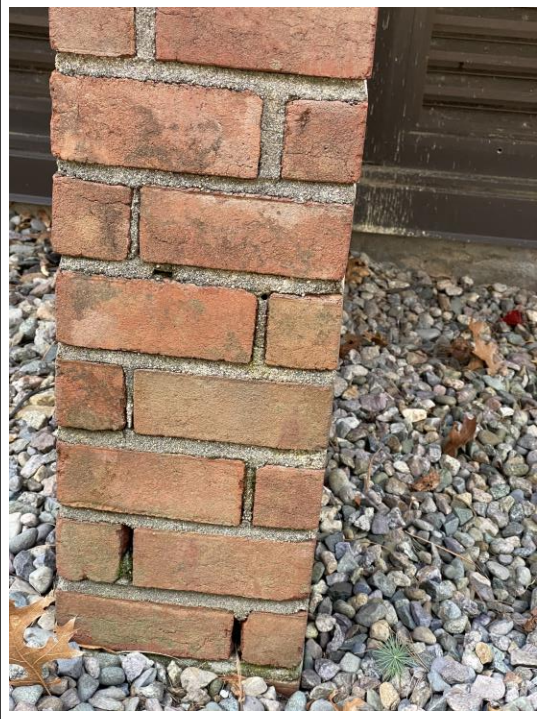
CEILING DAMAGE



CABLES RUN ALONG SURFACE DUE TO ROOF/CEILING DESIGN



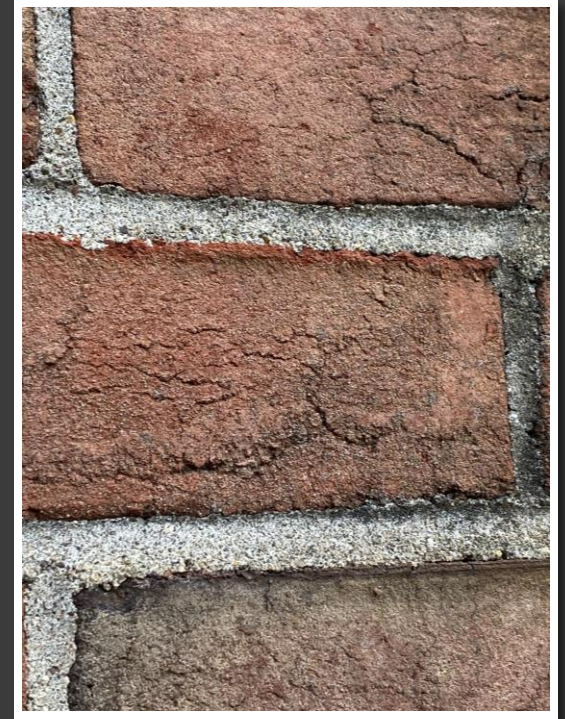
BRICK DETERIORATION



Brick Pointing



Brick Staining



Brick Cracking

NORTH FAÇADE DETERIORATION



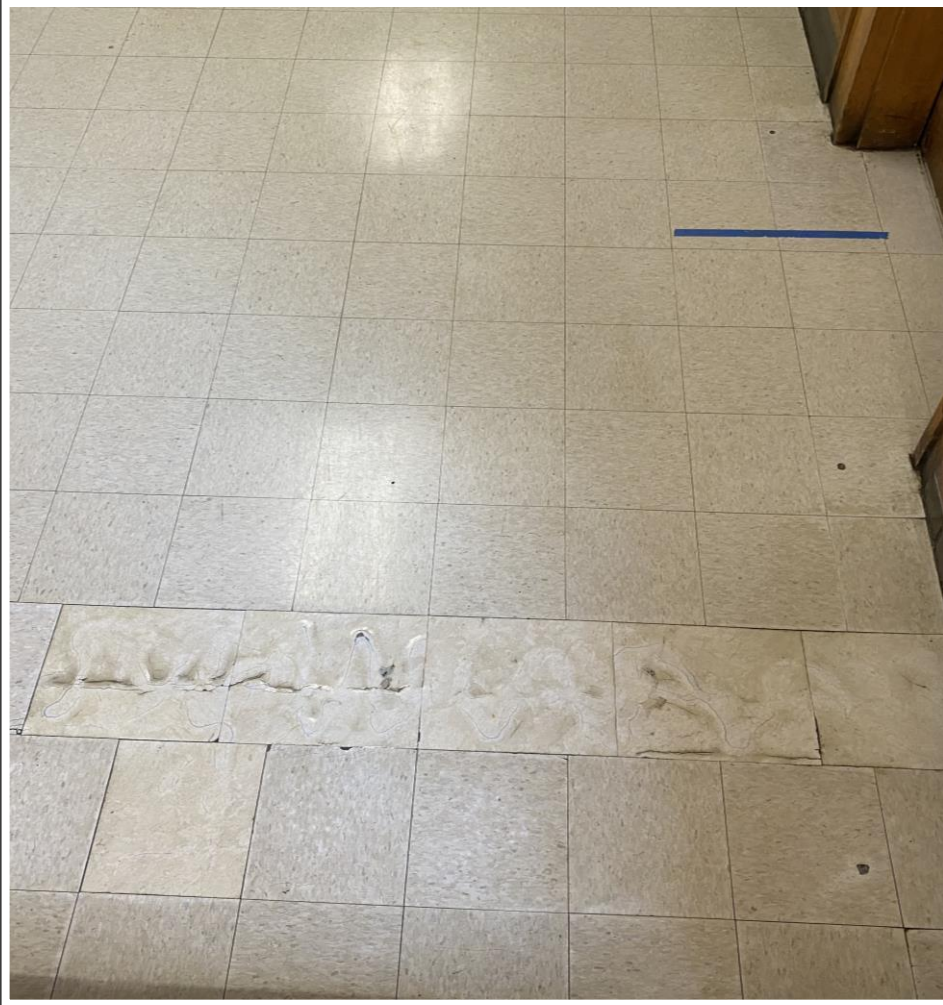
SITE DRAINAGE



WOOD FRAMING ON WINDOWS AND STRUCTURE DECAYING



FLOORING DETERIORATION





H1-1

FIRST GRADE IS

.COOL!