

WM Avon MRF

Site Overview

Operation

24/6

45
employees
over 3 shifts

Volume

~25
Municipal
Contracts

~375
recycling
tons per day

Equipment

Balers



Optical Sorters



Fiber Screens



Glass Breaker

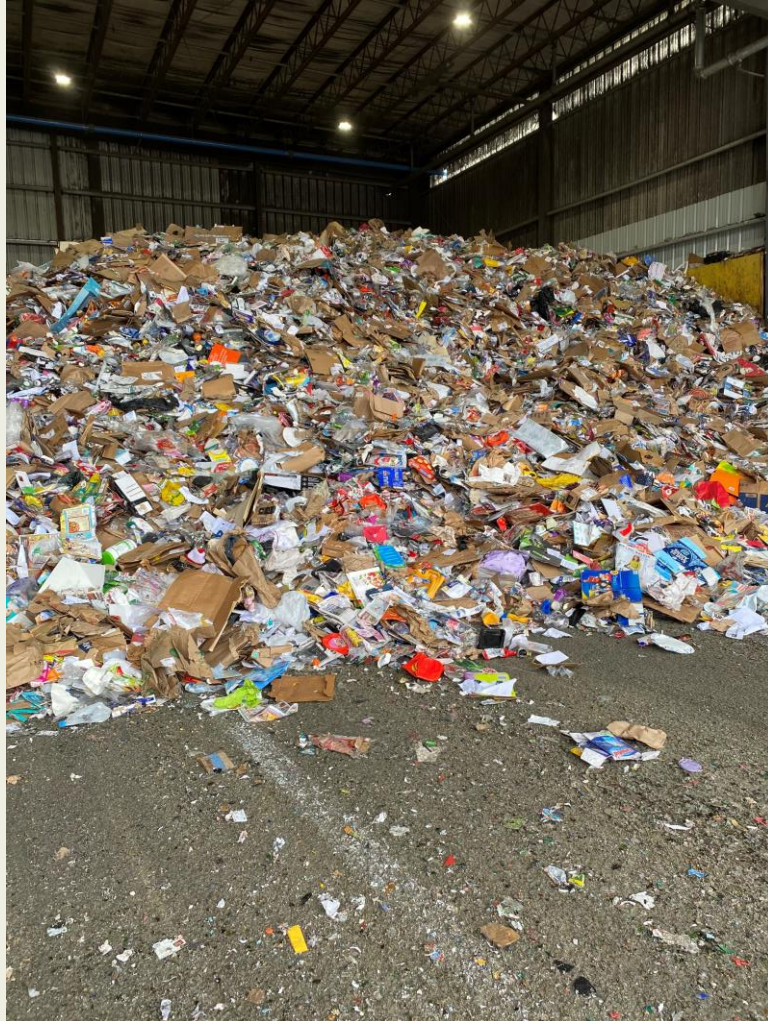


Drum Feeder

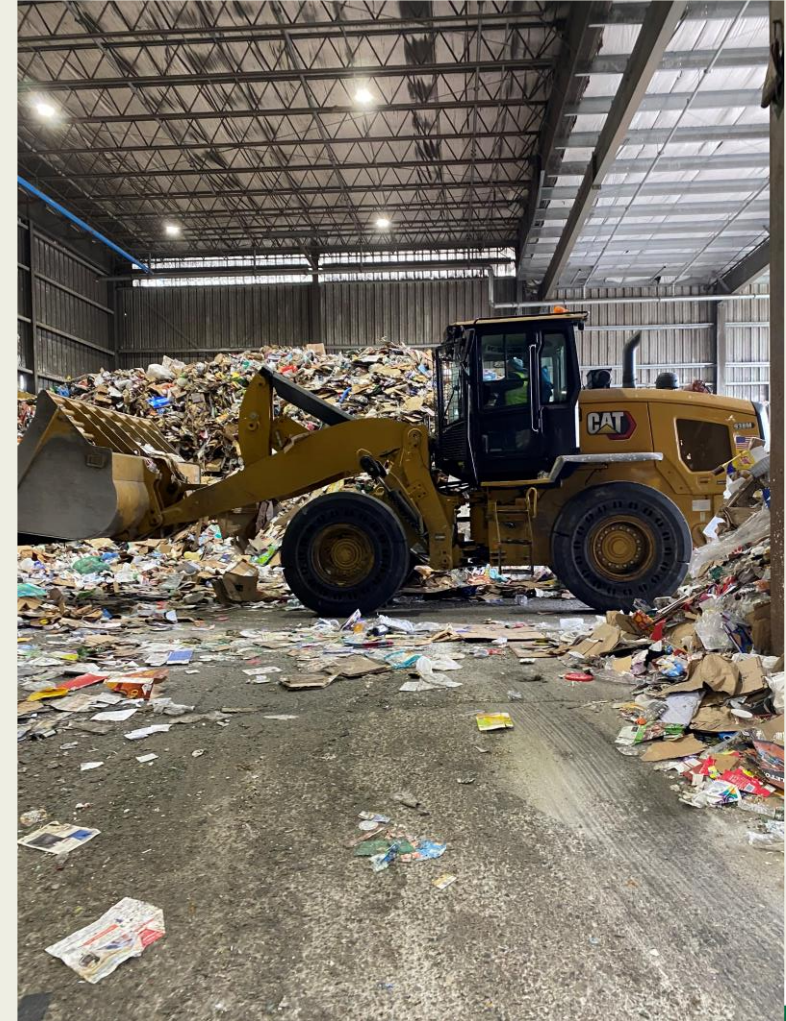


WM Avon MRF: Material

Inbound Material



Material Handling



WM



WM Avon MRF: Material

Material Processing

25 Tons Per Hour = 6 residential trucks

Sorter headcount per shift

2 Sorters @ Presort

2 Sorters @ OCC QC

2 Sorters @ Secondary Pre-sort

2 Sorters @ Magnet QC

Can you spot any hazards?



WM Avon Fire

Avon Fire Overview

On 7/22/24 8:30am a fire started in the OCC screen while employees were on break. Situation was discovered when power went out to the building. Upon discovery, determination was made to evacuate. ~9 town fire departments responded and was able to put the fire out. No Injuries.

Damage

Equipment Damage:
3 OCC shafts
Conveyor belts
E-stop Repairs

Building Damage:
Roof
Electrical
Communication Systems

Outcome

- 6 Weeks of complete shutdown =
- Employees out of work (luckily they returned)
 - Diversion of material (limited outlets)



CONFIDENTIAL AND PROPRIETARY INFORMATION OF
WM



WM Avon Fire's

Overall notes

- Perfect environment for potential catastrophic events:
 - Fuel (fiber materials, dust, etc.)
 - Equipment that can cause batteries to ignite
 - Staff are not trained fire fighters but have to react frequently due to batteries ending up in recycling bins

