

Massachusetts
Department
of
ENVIRONMENTAL
PROTECTION

Summary

Waste Ban Regulations:
310CMR19.017

Prohibited Recyclable Materials:

Glass, metal and plastic containers; paper, including cardboard; leaf and yard waste; asphalt pavement, brick, concrete; clean gypsum wallboard; wood; metal; textiles; mattresses; commercial organic material; batteries; whole tires; white goods (large appliances); cathode ray tubes (TVs and computer monitors).

fact sheet

Your Municipality and Waste Ban Compliance

What is the purpose of the waste bans?

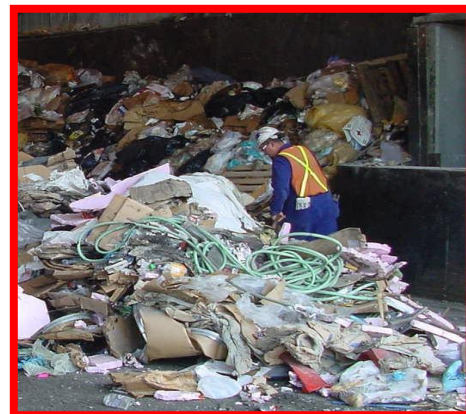
Waste bans are prohibitions on the disposal and transfer for disposal of certain toxic and/or recyclable items (see "Summary" sidebar and reverse). Waste bans are intended to encourage reuse and/or recycling of certain waste materials, conserve disposal capacity, and reduce adverse environmental impacts from waste materials containing toxic substances.

What is MassDEP's waste ban compliance strategy?

MassDEP has an equitable two-pronged approach to compliance and enforcement of the waste bans.

This strategy holds all parties responsible for waste ban compliance, including solid waste facility operators, haulers and generators of solid waste:

- MassDEP reviews and approves solid waste facility waste ban compliance plans and inspects solid waste facilities to ensure they are in compliance with monitoring, inspections, record-keeping, signage, and other facility waste ban requirements.
- MassDEP conducts inspections at solid waste facilities to identify haulers and generators (businesses, institutions, municipalities, etc.) that dispose of banned materials.



Where necessary, MassDEP pursues enforcement actions against facilities, haulers and waste generators that violate waste bans.

What Do Municipalities Need to Know?

- **As solid waste facility operators**, municipalities that operate landfills and transfer stations must maintain and comply with their operating permit, including the waste ban plan.
- **As service providers to residents**, municipalities that collect solid waste and/or contract for collection service must also comply with waste bans.
- **As generators of solid waste**, municipalities need to ensure that banned materials are separated from trash at their municipal offices and facilities, including schools, town halls, and parks departments.
- **As recycling program managers**, municipal recycling officials can use waste ban enforcement to strengthen local recycling requirements and hold haulers responsible for recycling service.

Materials Banned from Disposal (by 310 CMR 19.017)

Asphalt Pavement, Brick, and Concrete: asphalt pavement, brick and concrete from construction and demolition of buildings, roads, bridges, and similar sources.

Massachusetts Department of
Environmental Protection
100 Cambridge Street
Suite 900
Boston, MA 02114

Commonwealth of
Massachusetts

Executive Office of
Energy and Environmental Affairs

Department of
Environmental Protection

Produced by the
Bureau of Air and Waste
September 2024

Printed on recycled paper

This information is available in
alternate format. Please
contact Melixza Esenyie at
617-626-1282. TTY#
MassRelay Service
1-800-439-2370.



Batteries: lead-acid batteries used in motor vehicles or stationary applications.

Cathode Ray Tubes: any intact, broken, or processed glass tube used to provide the visual display in televisions, computer monitors and certain scientific instruments such as oscilloscopes.

Clean Gypsum Wallboard: A panel (known as drywall) with a gypsum core and faced with a heavy paper or other material on both sides that is not contaminated with paint, wallpaper, joint compound, adhesives, or other substances after manufacture.

Glass Containers: glass bottles and jars (soda-lime glass). The ban does not apply to light bulbs, Pyrex cookware, plate glass, drinking glasses, windows, windshields and ceramics.

Leaves: deciduous and coniferous leaf deposition.

Mattresses: Resilient material or combination of materials that is enclosed by ticking, used alone or in combination with other products, that is intended for sleeping upon, except for mattresses that are contaminated with mold, bodily fluids, insects, oil, or hazardous substances. "Mattress" does not include any mattress pad, mattress topper, sleeping bag, pillow, car bed, carriage, basket, dressing table, stroller, playpen, infant carrier, lounge pad, crib bumper, liquid or gaseous filled ticking, including any water bed and any air mattress that does not contain upholstery material between the ticking and the mattress core, and mattresses in futons and sofa beds. Mattresses includes box springs.

Metal: Ferrous and non-ferrous metals from used appliances, building materials, industrial equipment, vehicles, and manufacturing processes.

Metal Containers: aluminum, steel or bi-metal beverage and food containers.

Recyclable Paper: all paper, cardboard, and paperboard products. The ban does not apply to tissue paper, toweling, paper plates and cups, wax-coated cardboard, and other low-grade paper products that cannot be used by paper mills as a result of normal intended use.

Single Polymer Plastics: plastic containers including bottles, jugs, jars, and tubs.

Textiles: Clothing, footwear, bedding, towels, curtains, fabric, and similar products, except for textiles that are contaminated with mold, bodily fluids, insects, oil, or hazardous substances.

White Goods: appliances employing electricity, oil, natural gas or liquefied petroleum gas to preserve or cook food; wash or dry clothing, cooking or kitchen utensils or related items. These typically include refrigerators, freezers, dishwashers, clothes washers, clothes dryers, gas or electric ovens and ranges, and hot water heaters.

Whole Tires: motor vehicle tires of all types. Whole tires may be disposed at combustion facilities. Shredded tires (a tire that has been cut, sliced or ground into four or more pieces such that the circular form of the tire has been eliminated) are not prohibited.

Wood: Treated and untreated wood, clean wood (trees, stumps, and brush, including but not limited to sawdust, chips, shavings and bark). Wood may be disposed at combustion facilities.

Yard Waste: grass clippings, weeds, garden materials, shrub trimmings, and brush 1" or less in diameter (but not diseased plants).

Commercial Organic Material: Food and vegetative material from businesses and institutions that dispose of one ½ ton or more organic material per week.

For More Information:

- Waste ban information can be found on MassDEP's web site at:
<http://www.mass.gov/eea/agencies/massdep/recycle/solid/massachusetts-waste-disposal-bans.html>
- For business assistance, contact the Recycling Works in Massachusetts program at (888)254-5525 or via email at info@recyclingworksma.com.

Massachusetts Department of
Environmental Protection
100 Cambridge Street
Suite 900
Boston, MA 02114

Commonwealth of
Massachusetts

Executive Office of
Energy and Environmental Affairs

Department of
Environmental Protection

Produced by the
Bureau of Air and Waste
September 2024

Printed on recycled paper

This information is available in
alternate format. Please
contact Melixza Esenyie at
617-626-1282. TTY#
MassRelay Service
1-800-439-2370.

