

ROAD SAFETY AUDIT

Park Street (Route 27) at Turnpike Street
(including Campanelli Parkway and Surrounding Area)

Town of Stoughton

December, 2019

Prepared For:
Town of Stoughton

Prepared By:
Old Colony Planning Council
70 School Street
Brockton, MA. 02301



Prepared under MassDOT Contract #108210
through the Old Colony Metropolitan Planning
Organization FFY 2020 Unified Planning Work
Program (UPWP)

Table of Contents

Contents

Background	3
Project Data	3
Project Location and Description.....	3
Audit Observations and Potential Safety Enhancements.....	5
Summary of Road Safety Audit.....	5

List of Appendices

Appendix A.	RSA Meeting Agenda
Appendix B.	RSA Audit Team Contact List
Appendix C.	Detailed Crash Data
Appendix D.	Additional Information

List of Figures

Figure 1: Locus Map.....	4
--------------------------	---

List of Tables

Table 1: Participating Audit Team Members.....	3
Table 2: Estimated Time Frame and Costs Breakdown.....	8
Table 3: Potential Safety Enhancement Summary.....	9
Table 4: Potential Safety Enhancement Summary (Continued)	10

Background

The Road Safety Audit for Park Street (Route 27) at Turnpike Street in Stoughton was conducted by the Old Colony Planning Council in response to a request for the Audit from the Town of Stoughton Town Planner. The Town of Stoughton Town Planner submitted the request through the Old Colony Metropolitan Planning Organization's Unified Planning Work Program's Local Highway Technical Assistance Program. The request was prompted by a concerns over the poor alignment of the intersection, the number of crashes that have occurred, and poor levels-of-service.

Project Data

The Road Safety Audit for the Park Street (Route 27) at Turnpike Street intersection was held on October 28, 2019 at the Stoughton Police Station in Stoughton, Massachusetts. Table 1 contains the names and agency affiliations of the multidisciplinary team that participated in the Audit. Audit participants were provided a list of crashes that occurred at the intersection from 2016 through 2018, a collision diagram, summary tables and charts providing analysis of crashes that have occurred, and traffic data (traffic volumes, vehicle speeds, and vehicle classifications) both in advance of the meeting and at the audit itself. These materials are contained in the Appendix of this Report.

Table 1: Participating Audit Team Members

Audit Team Member	Agency/Affiliation
James O'Connor	Stoughton Police Department
Cynthia Walsh	Town of Stoughton Resident
John Charbonneau	Town of Stoughton Planning Department
Tom Fitzgerald	Town of Stoughton – DPW
Marc Tisdelle	Town of Stoughton - Engineering
Craig Horsfall	Town of Stoughton – Engineering
Jason Walters	MassDOT
William McNulty	Old Colony Planning Council
Ray Guarino	Old Colony Planning Council
Paul Chenard	Old Colony Planning Council

Project Location and Description

Park Street in the Town of Stoughton extends from the Stoughton center south to the Brockton City Line. Park Street is designated as Route 27 and is under state jurisdiction (Massachusetts Department of Public Works, MassDOT). It is classified as an Urban Principal Arterial. Park Street is a two lane road in Stoughton and the pavement width is approximately 50 feet wide. The lane use consists of two travel lanes and a paved shoulder on both sides of the road (approximately 10 feet wide). The speed limit is posted at 40 miles per hour on Park Street on the northbound and southbound side of the road just north of the Turnpike Street intersection. Turnpike Street is a two-lane road, which is classified as an Urban Collector and is under the jurisdiction of the Town of Stoughton. There is no speed regulation for this

road, and a “Thickly Settled, 30 MPH” warning sign is posted on the northbound and southbound side of the road. The pavement width of Turnpike Street varies between 27 and 29 feet and contains two twelve foot travel lanes with limited shoulders (two to three feet wide on each side of the road). Campanelli Parkway is classified as a local road under the jurisdiction of the Town of Stoughton. It is approximately 50 feet wide with a raised median and provides access to a number of industrial parcels.

Figure 1 shows a locus map of the Road Safety Audit study area.

Figure 1: Locus Map



Audit Observations and Potential Safety Enhancements

During the RSA meeting prior to the field visit, an introduction of the RSA process and a summary of the crash information was presented to the audit participants. Following this presentation, the members of the audit team were asked to discuss the existing issues that may affect safety at the intersection. The audit team then visited the site as a group, at which time observations, safety concerns, and deficiencies were identified and documented by OCPC staff.

Provided as follows is a summary of the safety concerns and the potential enhancements that were identified during the RSA.



The meeting began with a summary of the crash data, traffic operations, and existing conditions.

Summary of Road Safety Audit

Safety Issue: The peak hour intersection Levels-of-Service are at LOS “F” during the morning and afternoon peak hours.

Morning and afternoon peak hour turning movement counts were conducted at the intersection by OCPC (and are included in the Appendix), and level-of-service analyses (LOS) were performed to qualify and quantify traffic operations. The LOS analysis showed that the left and right turns from Turnpike Street to Park Street experience LOS “F” (forced flow failed) conditions during the morning and afternoon peak hours. Long delays and long queues on the stop signed approach of the intersection create unsafe conditions due to left turn and right turn vehicles from the side street (Turnpike Street) forcing their way onto the major road (Park Street) without sufficient gaps in the traffic flow forcing vehicles on the major street to slow down or worse, causing vehicles to collide. In addition, Turnpike Street is an alternative route for Route 24 and becomes congested during times of reoccurring congestion and crashes and incidents (non-reoccurring congestion), happen on Route 24.

A Signal warrant analysis was performed for the intersection by OCPC in accordance with the standards in the FHWA, *Manual on Uniform Traffic Control Devices*. The signal warrant analysis showed that the intersection satisfies Warrant 1, Eight-hour Vehicular Volume, Warrant 2, Four-hour vehicular volume, and Warrant 3, Peak Hour Delay/Volumes.

Safety Enhancement: Install traffic signals at the intersection.

Safety Issue: Sight distance from the Turnpike Street approach is limited.

The sight distance for vehicles queueing on the Turnpike Street stop signed approach is limited due to a number of factors. There is a de-facto right turn lane on this approach, which creates a situation where left turn vehicles waiting to turn left block the sight lines for vehicles stacked up next to them waiting to turn right onto Park Street. The sign on the island that warns vehicles entering Turnpike Street from Park Street to stay right is at a height and in a location on the island in which it blocks the sight lines for vehicles queued on the Turnpike Street approach waiting to turn left to Park Street. In addition, vehicles

on the Turnpike northbound approach to the intersection that are turning right to Turnpike Street, sometimes use the break down lane as a “de facto” right turn lane. Vehicles behind them are sometimes not visible to motorists queued on the Turnpike Street approach waiting to turn left or right onto Park Street.

Safety Enhancement: Reconstruct, realign the intersection, and narrow the Turnpike Street approach to create a single right turn, left turn shared use lane.

Safety Enhancement: The Town should consider reassessing sign placement to conform to the *Manual on Uniform Traffic Control Devices* (MUTCD) so that sign placement does not hinder sight lines.

Safety Issue: The Lighting at the intersection is inadequate.

Potential Safety Enhancement: Improve lighting at the intersection.

Safety Issue: Intersection visibility

There is an intersection ahead warning sign on Park Street approaching the intersection, but not on the southbound side. The intersection visibility on the southbound Park Street approach is limited due to the curve in the road.

Safety Enhancement: Evaluate signage including using consistent style (MUTCD compliant) street name signs along Park Street (replace those not in compliance, replace roadway signage with retroreflective MUTCD compliant signage, and add an intersection ahead warning sign on the Park Street southbound approach).

Safety Issue: Turnpike Street intersects at a skewed angle with a wide turning radii for right turning vehicles Park Street northbound to Turnpike Street resulting in excessive speeding for right turns, and there is an ascending grade on the Turnpike Street approach.



Sign on the traffic island dedicating Patrick Walsh Square has been hit by vehicles encroaching on the traffic island.

The skewed angle at which the roads intersects leads to poor visibility of the intersection ahead and lane departure crashes. Vehicles turning right from Park Street northbound to Turnpike Street eastbound take the turn at high speeds due to the wide turning radii. Speeds on Park Street (Route 27) are excessive, and there are crashes that are speed related. Heavy vehicles have difficulty turning in and out of Turnpike Street due to the skewed nature of the intersection. Heavy vehicles turning right from Turnpike Street and heavy vehicles turning left from Park Street southbound to Turnpike Street end up running off the road onto the northeast corner of the intersection. In addition, commercial heavy vehicles turning left from Turnpike Street to Park Street southbound encroach on the traffic island in the middle of the intersection. There is a memorial sign to Patrick Walsh on the island that has been hit by lane departure crashes several times. The existing memorial sign at the intersection should be preserved under any redesign or configuration of the intersection.

Safety Enhancement: Reconstruct the intersection to tighten up the turning radii on the south east corner to reduce speeds of vehicles turning right from Park Street northbound to Turnpike Street (this will also shorten the walking distance across the Turnpike Street approach for pedestrians. In addition, flatten the grade on the Turnpike Street westbound approach (there is a possibility of a right of way taking on the

eastern side of Turnpike Street if Turnpike Street is relocated, as well as the need to build a retaining wall).

Safety Issue: There is a pattern of angle type crashes occurring in close vicinity to the intersection at the gasoline station driveways.

Safety Enhancement: Consider implementing access management techniques and reducing the number of gasoline station curb-cuts to reduce the number of turning movement conflicts. This involves limiting the number of curb cuts and driveways as well as limiting the types of movements at driveways (right turns only).

Safety Issue: Sidewalks at this location are limited and there are no crosswalks across Park Street.

Safety Enhancement: Consider sidewalk improvements including extending existing sidewalks and adding a sidewalk from Park Street to Campanelli Parkway. In addition, restripe existing crosswalk and consider additional crosswalks across Park Street.



Vehicles turning right from Park Street northbound to Turnpike Street take the turn at high speeds due to the wide turning radii.

Safety Issue: There is a lack of bicycle accommodations at the intersection.

Safety Enhancement: Consider adding a multi-use bicycle and pedestrian path along Park Street (Route 27).

Safety Issue: Turnpike Street does not have an established Speed Regulation.

Safety Enhancement: Although the speed limit on Turnpike Street is posted at 30 miles per hour, there are no established speed regulations on file. The posted speed limits should be removed. The prima fascia speed limit on Turnpike Street is 30 miles per hour; however, this should be posted as a warning sign as “Thickly Settled”.

Safety Enhancement: The Town can consider reducing the speed limit on Turnpike Street to 25 miles per hour. Section 193 of Chapter 218 of the Acts of 2016 added A new section to Massachusetts General Laws (MGL Chapter 90) allows the legislative body in a municipality to establish a speed limit of 25 mph on any roadway inside a thickly settled or business district in the municipality that is not a State Highway or is not otherwise posted pursuant to the issuance of special speed regulations.

Summary of Road Safety Audit

Based on the review of data, on-site field observations and group discussion, the RSA team identified possible enhancements that could improve safety at the intersection. Further study and design work will need to be conducted to determine the feasibility of making some of the improvements. Table 2 summarizes the estimated time frame and costs breakdown and Tables 3 and 4 summarize the safety issues, possible enhancements, estimated safety payoff, time frame, cost, and responsibility. Safety payoff estimates are based on engineering judgment and are categorized as low, medium, and high. The time frame is categorized as short-term (<1 year), midterm (1 to 3 years), or long-term (typically >3 years). Long-term improvements are typically considered to be substantial improvements with an expected time frame for implementation greater than 3 years. The costs are categorized as low (<\$10,000), medium (\$10,001 to \$50,000), or high (>\$50,000).

Table 2: Estimated Time Frame and Costs Breakdown

Time Frame		Costs	
Short-Term	<1 Year	Low	<\$10,000
Mid-Term	1-3 Years	Medium	\$10,001-\$50,000
Long-Term	>3 Years	High	>\$50,000

Table 3: Potential Safety Enhancement Summary

Safety Issue	Potential Safety Enhancement	Safety Payoff	Time Frame	Cost	Jurisdiction
The peak hour intersection Levels-of-Service are at LOS "F" during the morning and afternoon peak hours.	Install traffic signals at the intersection.	High	>3 Years	High	Stoughton/ MassDOT
Sight distance from the Turnpike Street approach is limited.	Reconstruct, realign the intersection, and narrow the Turnpike Street approach to create a single right turn, left turn shared use lane.	Medium	1-3 Years	High	Stoughton/ MassDOT
	The Town should consider reassessing sign placement to conform to the Manual on Uniform Traffic Control Devices (MUTCD) so that sign placement does not hinder sight lines.	Medium	<1 Year	Low	Stoughton/ MassDOT
The Lighting at the intersection is inadequate.	Improve lighting at the intersection.	Medium	<1 Year	Medium	Town of Stoughton
Intersection visibility - there is an intersection ahead warning sign on Park Street approaching the intersection, but not on the southbound side. The intersection visibility on the southbound Park Street approach is limited due to the curve in the road.	Evaluate signage including using consistent style (MUTCD compliant) street name signs along Park Street (replace those not in compliance, replace roadway signage with retroreflective MUTCD compliant signage, and add an intersection ahead warning sign on the Park Street southbound approach.)	Medium	<1 Year	Low	MassDOT
Turnpike Street intersects at a skewed angle with a wide turning radii for Park Street northbound to Turnpike Street resulting in high speed right turns, and there is an ascending grade on the Turnpike Street approach.	Reconstruct the intersection to tighten up the turning radii on the south east corner. This will reduce the speeds of right turns from Park Street northbound to Turnpike Street and shorten the walking distance across Turnpike Street for pedestrians. Flatten the grade on the Turnpike Street westbound approach. (If Turnpike Street is relocated, there is potential ROW taking and a need to build a retaining wall).	Medium	1-3 Years	High	Stoughton/ MassDOT

Table 4: Potential Safety Enhancement Summary (Continued)

Safety Issue	Potential Safety Enhancement	Safety Payoff	Time Frame	Cost	Jurisdiction
There is a pattern of angle type crashes occurring in close vicinity to the intersection at the gasoline station driveways.	Consider implementing access management techniques and reducing the number of gasoline station curb-cuts to reduce the number of turning movement conflicts.	Medium	<1 Year	Low	MassDOT
Sidewalks at this location are limited and there are no crosswalks across Park Street.	Consider sidewalk improvements including extending existing sidewalks and adding a sidewalk from Park Street to Campanelli Parkway. In addition, restripe the existing crosswalk and consider additional crosswalks across Park Street.	Medium	>3 Years	High	Town of Stoughton/ MassDOT
There is a lack of bicycle accommodations at the intersection.	Consider adding a multi-use bicycle and pedestrian path along Park Street (Route 27).	Medium	>3 Years	High	MassDOT
Turnpike Street does not have an established Speed Regulation.	The posted speed limit on Turnpike Street is 30 MPH, There is no speed regulation on file. The posted speed limits signs should be removed. The prima fascia speed limit on Turnpike Street is 30 MPH, this should be posted as a warning sign as "Thickly Settled".	Medium	<1 Year	Low	Town of Stoughton
	The Town can consider reducing the speed limit on Turnpike Street to 25 miles per hour. Section 193 of Chapter 218 of the Acts of 2016 added A new section to Massachusetts General Laws (MGL Chapter 90) allows the legislative body in a municipality to establish a speed limit of 25 mph on any roadway inside a thickly settled or business district in the municipality that is not a State Highway or is not otherwise posted pursuant to the issuance of special speed regulations.	Medium	<1 Year	Low	Town of Stoughton

Appendix A. RSA Meeting Agenda

Agenda

Road Safety Audit

Brockton, MA

Intersection of Park Street (Route 27) at Turnpike Street Including Campanelli Parkway and Surrounding Area

Meeting Location: Stoughton Police Town Hall
26 Rose St, Stoughton, MA 02072
Monday October 28, 2019
9:30 AM – 12:00 PM

Type of meeting: Road Safety Audit
Attendees: Invited Participants to Comprise a Multidisciplinary Team
Please bring: Thoughts and Enthusiasm

9:30 AM Welcome and Introductions
9:35 AM Review of Site Specific Material - Review and Discuss Project
• Review of Crash Data and Traffic Data
• Existing Conditions and Known Challenges
10:15 AM Visit the Intersection and Discussion
• Identify deficiencies at the study area location
• OCPC staff will document all observations and comments
11:00 AM Wrap up Site Visit and Post Visit Discussion Meeting
• Discuss issues and document and finalize potential improvements
12:00 PM Adjourn for the Day

Instructions for Participants:

- Before attending the RSA, participants are encouraged to drive through the intersection and complete/consider elements on the RSA Prompt List with a focus on safety.
- All participants will be actively involved in the process throughout.
- After the RSA meeting, participants will be asked to comment and respond to the document materials to assure it is reflective of the RSA completed by the multidisciplinary team.
- **CONTACT:** Please direct questions regarding this RSA to Raymond Guarino, OCPC, (508) 583-1833, Ext 212, rguarino@ocpcrpa.org.



Old Colony Planning Council
70 School Street
Brockton, MA 02301

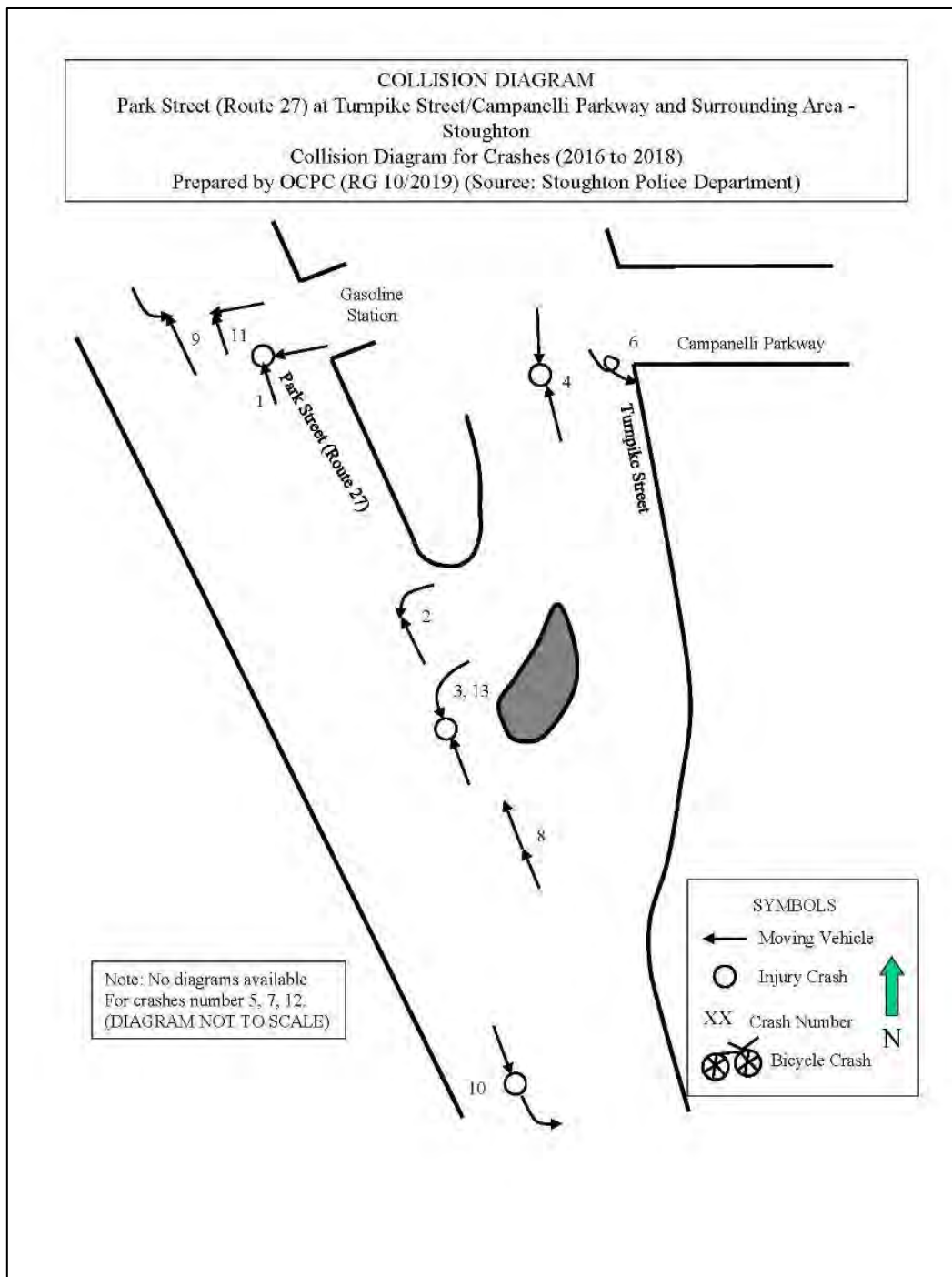
Appendix B. RSA Audit Team Contact List

Participating Audit Team Members

Date: October 28, 2019 Location: Park Street at Turnpike Street (including Campanelli Parkway and surrounding area, Stoughton, MA)

Audit Team Members	Agency/Affiliation	Email Address
James O'Connor	Stoughton Police	joconnor@stoughton-ma.gov
Cynthia Walsh	Town of Stoughton Resident	(not available)
John Charbonneau	Town of Stoughton Planning	jcharbonneau@stoughton-ma.gov
Marc Tisdelle	Stoughton Engineering	mtisdelle@stoughton-ma.gov
Craig Horsfall	Stoughton Engineering	chorsfall@stoughton-ma.gov
Tom Fitzgerald	Stoughton DPW	tfitzgerald@stoughton-ma.gov
Jason Walters	MassDOT District 5 Projects	Jason.walters@dot.state.ma.us
William McNulty	OCPC	wmcnulty@ocpcrpa.org
Ray Guarino	OCPC	rquarino@ocpcrpa.org
Paul Chenard	OCPC	pchenard@ocpcrpa.org

Appendix C. Detailed Crash Data

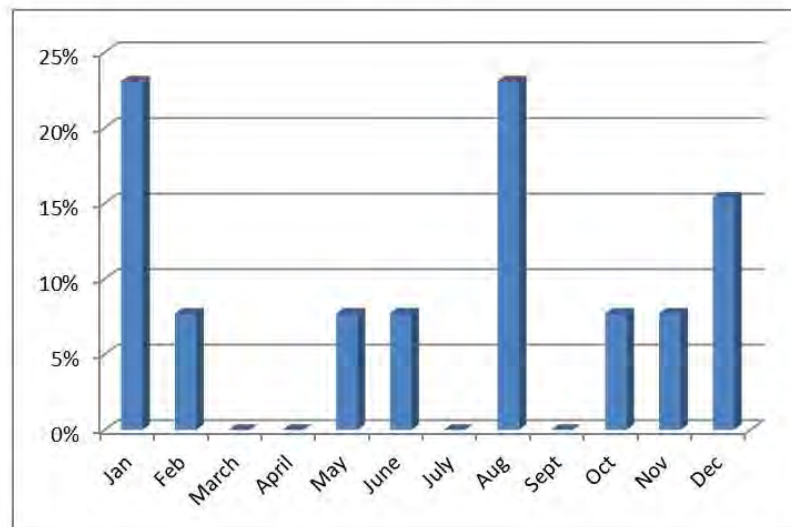


**Crash Data Summary Table
at Park Street (Route 27)/Turnpike Street - Stoughton**

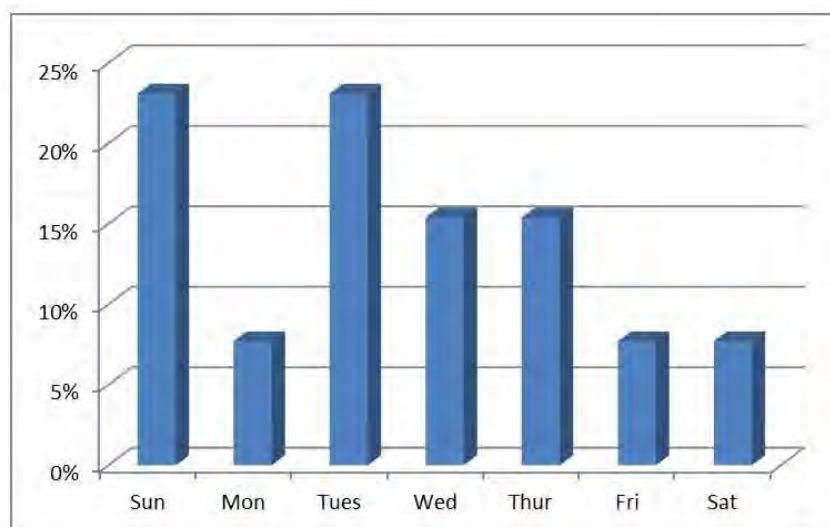
Crash Num	P.D. Code	Crash Date	Crash Day	Time of Day	Manner of Coll	Light Cond	Weather	Road Surf	Age 1	Age 2	Comments	Injury
1	16-20-AC	1/12/2016	Tues	1:04 PM	Angle	Daylight	Clear	Dry	48	72	Gas station entrance	INJ
2	16-486-AC	8/8/2016	Mon	2:54 PM	Angle	Daylight	Clear	Dry	22	45		PDO
3	16-527-AC	8/23/2016	Tues	5:26 PM	Angle	Daylight	Clear	Dry	85	24		INJ
4	16-664-AC	11/6/2016	Sun	1:36 PM	Head-On	Daylight	Clear	Wet	32	55		INJ
5	Unknown	8/23/2016	Tues	5:46 PM	NA	Daylight	NA	NA				PDO
6	17-42-AC	1/15/2017	Sun	3:55 AM	Ran off road	Dark Lighted Rd	Cloudy	Dry	38			PDO
7	Unknown	1/22/2017	Sun	5:44 AM	Ran off road	NA	NA	NA				NA
8	17-87-AC	2/2/2017	Thur	1:03 PM	Rear-End	Daylight	Clear	Dry	63	47		PDO
9	17-381-AC	6/24/2017	Sat	8:50 AM	Angle	Daylight	Cloudy	Wet	17	48	Gas station entrance	PDO
10	17-748-AC	12/13/2017	Wed	3:26 PM	Rear-End	Daylight	Clear	Dry	27	58	Blue Hills Building entrance	INJ
11	17-770-AC	12/22/2017	Fri	3:56 PM	Angle	Dusk	Snow	Wet	51	26	Gas station entrance	PDO
12	Unknown	5/9/2018	Wed	11:18 AM	NA	Daylight	NA	NA				PDO
13	18-600-AC	10/26/2018	Thur	6:58 AM	Angle	Dawn	Clear	Dry	48	54		INJ

Park Street (Route 27)/Turnpike Street – Stoughton

Crash Month

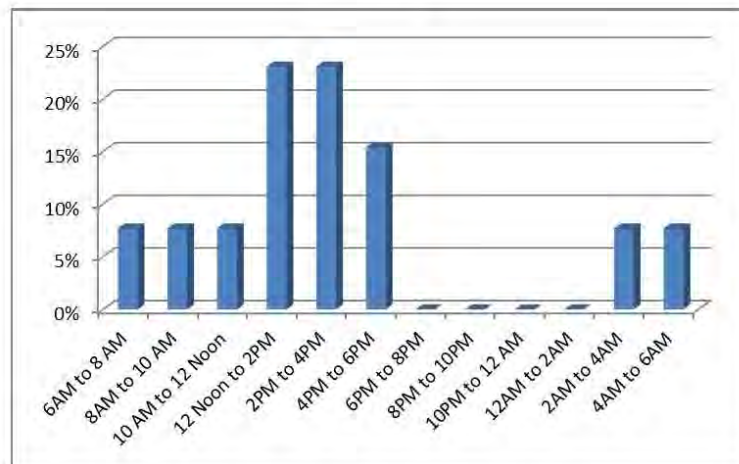


Day of the Week



Park Street (Route 27)/Turnpike Street – Stoughton

Time of Day

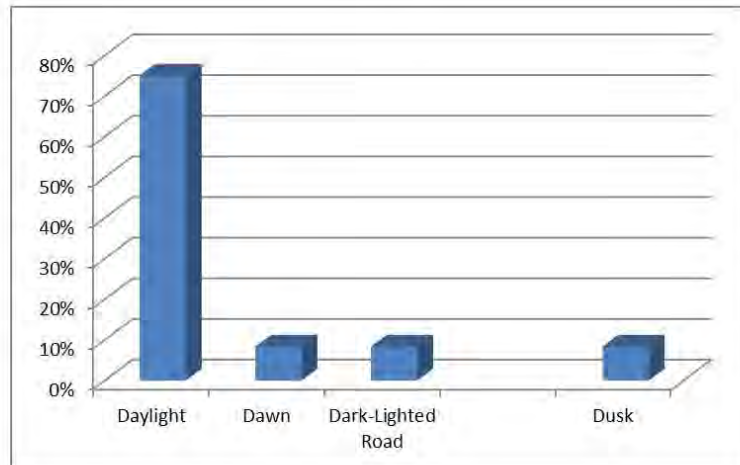


Manner of Collision

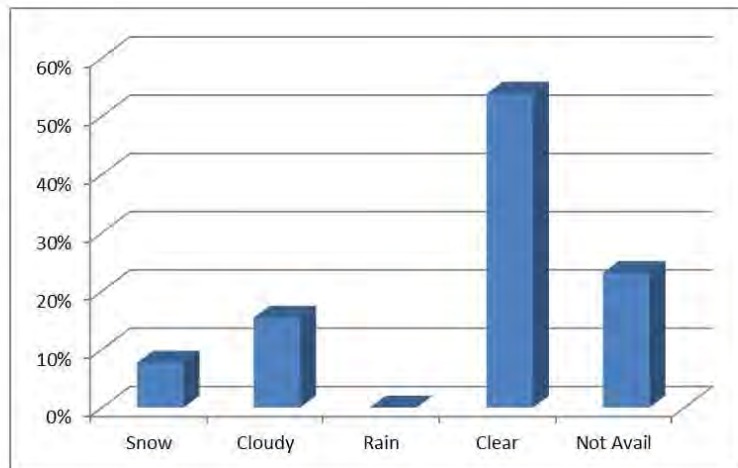


Park Street (Route 27)/Turnpike Street – Stoughton

Light Conditions

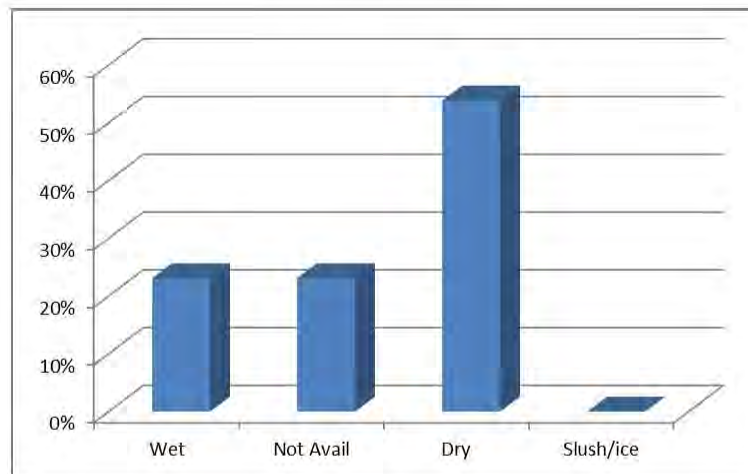


Weather Conditions

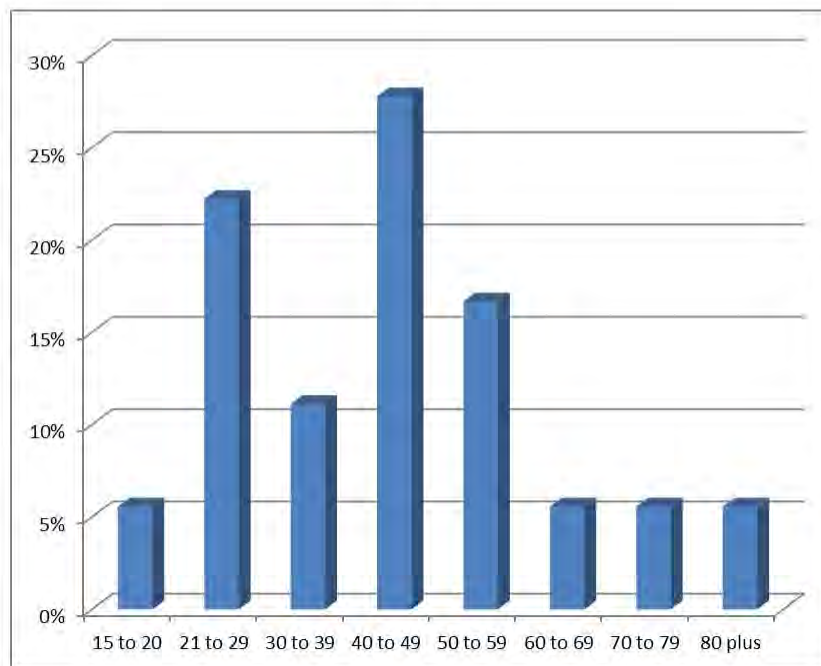


Park Street (Route 27)/Turnpike Street – Stoughton

Road Surface Conditions



Age



Park Street (Route 27)/Turnpike Street – Stoughton

Appendix D. Additional Information



Old Colony Planning Council

70 School Street
Brockton, MA 02301
(508) 583-1833

www.ocpcrpa.org

Community: Stoughton
Weather: Clear
Board # & Staff: DB-400 (3) / KM
Traffic Control: Stop Sign

File Name : Park Street (Route 27) & Turnpike Street_PM
Site Code : 285
Start Date : 9/19/2019
Page No : 4

Park Street (Route 27)					Turnpike Street					Park Street (Route 27)					MassDOT Facility						
Southbound					Westbound					Northbound					Eastbound						
Start Time	Right	Thru	Left	Peds	App. Total	Right	Thru	Left	Peds	App. Total	Right	Thru	Left	Peds	App. Total	Right	Thru	Left	Peds	App. Total	Int. Total
Peak Hour Analysis From 04:00 PM to 05:45 PM - Peak 1 of 1																					
Peak Hour for Entire Intersection Begins at 04:30 PM																					
04:30 PM	0	207	0	0	207	1	0	57	0	58	28	160	1	0	189	2	1	0	0	3	457
04:45 PM	0	185	1	0	186	3	0	52	0	55	29	150	0	0	179	1	4	0	0	1	421
05:00 PM	0	288	2	0	290	4	0	37	0	41	31	155	0	0	186	1	0	0	0	1	518
05:15 PM	0	239	0	0	239	4	1	46	0	51	23	164	0	0	187	0	0	0	0	0	477
Total Volume	0	919	3	0	922	12	1	192	0	205	111	629	1	0	741	4	1	0	0	5	1873
% App. Total	0	99.7	0.3	0		5.9	0.5	93.7	0		15	84.9	0.1	0		80	20	0	0		
PHF	.000	.998	.375	.000	.795	.750	.250	.842	.000	.884	.895	.959	.250	.000	.980	.500	.250	.000	.000	.417	.904
Cars	0	907	3	0	910	12	0	187	0	199	106	619	1	0	726	73	0	0	0	3	1838
% Cars	0	98.7	100	0	98.7	100	0	97.4	0	97.1	95.5	98.4	100	0	98.0	75.0	0	0	0	60.0	98.1
Buses	0	0	0	0	0	0	0	0	0	0	0	5	0	0	5	0	0	0	0	0	5
% Buses	0	0	0	0	0	0	0	0	0	0	0	0.8	0	0	0.7	0	0	0	0	0	0.3
Trucks	0	12	0	0	12	0	1	5	0	6	5	5	0	0	10	1	1	0	0	2	30
% Trucks	0	1.3	0	0	1.3	0	100	2.6	0	2.9	4.5	0.8	0	0	1.3	25.0	100	0	0	40.0	1.6

Peak Hour Data

MassDOT Facility

Park Street (Route 27)

Peak Hour Begins at 04:30 PM

Out	In	Total
631	910	1541
5	0	5
5	12	17
641	922	1563

Out	In	Total
0	907	3
0	0	0
0	12	0
0	919	3

Right Thru Left Peds

Out	In	Total
109	189	308
0	0	0
6	6	12
115	205	320

Right Thru Left Peds

Out	In	Total
12	0	187
0	1	5
0	0	0
12	1	192
0	0	0

Right Thru Left Peds

North

Peak Hour Begins at 04:30 PM

Cars
Buses
Trucks

Left	Thru	Right	Peds
1	619	106	0
0	5	0	0
0	5	5	0
1	629	111	0

Out	In	Total
1097	726	1823
0	5	5
18	10	28
1115	741	1856

Park Street (Route 27)

Road Safety Audit - Park Street (Route 27) at Turnpike Street (including Campanelli Parkway and Surrounding Area), Town of Stoughton - Prepared by Old Colony Planning Council **FINAL**



Old Colony Planning Council

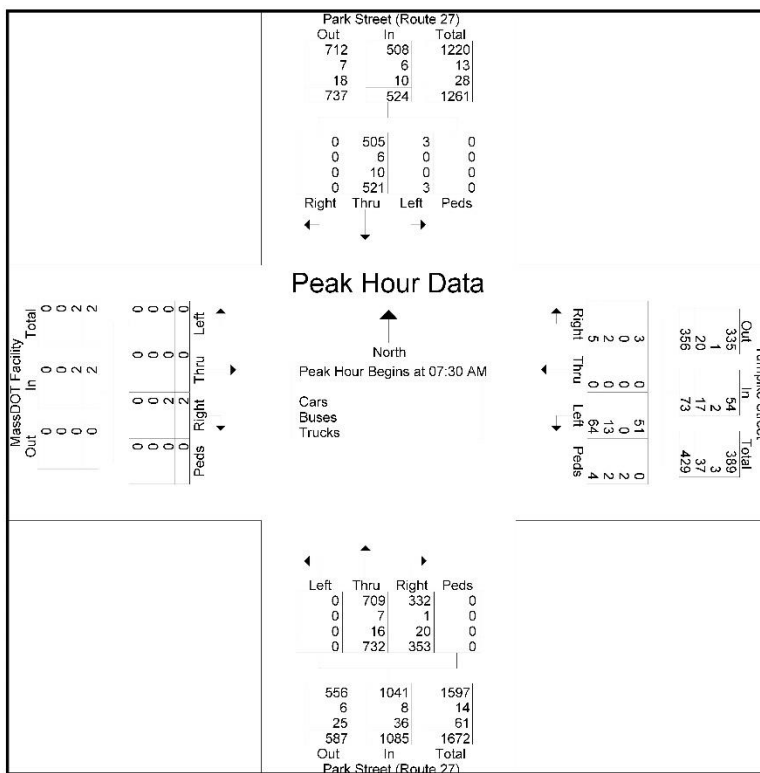
70 School Street
Brockton, MA 02301
(508) 583-1833

www.ocpcrpa.org

Community: Stoughton
Weather: Clear
Board # & Staff: DB-400 (3) / KM
Traffic Control: Stop Sign

File Name : Park Street (Route 27) & Turnpike Street_AM
Site Code : 285
Start Date : 9/17/2019
Page No : 4

	Park Street (Route 27) Southbound					Turnpike Street Westbound					Park Street (Route 27) Northbound					MassDOT Facility Eastbound					
Start Time	Right	Thru	Left	Peds	App. Total	Right	Thru	Left	Peds	App. Total	Right	Thru	Left	Peds	App. Total	Right	Thru	Left	Peds	App. Total	Int. Total
Peak Hour Analysis From 07:00 AM to 08:45 AM - Peak 1 of 1																					
Peak Hour for Entire Intersection Begins at 07:30 AM																					
07:30 AM	0	145	0	0	145	2	0	14	1	17	97	175	0	0	272	0	0	0	0	0	434
07:45 AM	0	128	1	0	129	1	0	18	1	20	90	181	0	0	271	0	0	0	0	0	420
08:00 AM	0	106	0	0	106	1	0	18	0	19	80	194	0	0	274	1	0	0	0	1	400
08:15 AM	0	142	2	0	144	1	0	14	2	17	86	182	0	0	268	1	0	0	0	1	430
Total Volume	0	521	3	0	524	5	0	64	4	73	353	732	0	0	1085	2	0	0	0	2	1684
% App. Total	0	99.4	0.6	0	6.8	0	87.7	5.5	0	32.5	67.5	0	0	0	100	0	0	0	0	0	0
PHF	.000	.898	.375	.000	.903	.625	.000	.889	.500	.913	.910	.943	.000	.000	.990	.500	.000	.000	.000	.500	.970
Cars	0	505	3	0	508	3	0	51	0	54	332	709	0	0	1041	0	0	0	0	0	1603
% Cars	0	96.9	100	0	96.9	60.0	0	79.7	0	74.0	94.1	96.9	0	0	95.9	0	0	0	0	0	95.2
Buses	0	6	0	0	6	0	0	0	2	2	1	7	0	0	8	0	0	0	0	0	16
% Buses	0	1.2	0	0	1.1	0	0	0	50.0	2.7	0.3	1.0	0	0	0.7	0	0	0	0	0	1.0
Trucks	0	10	0	0	10	2	0	13	2	17	20	16	0	0	36	2	0	0	0	2	65
% Trucks	0	1.9	0	0	1.9	40.0	0	20.3	50.0	23.3	5.7	2.2	0	0	3.3	100	0	0	0	100	3.9



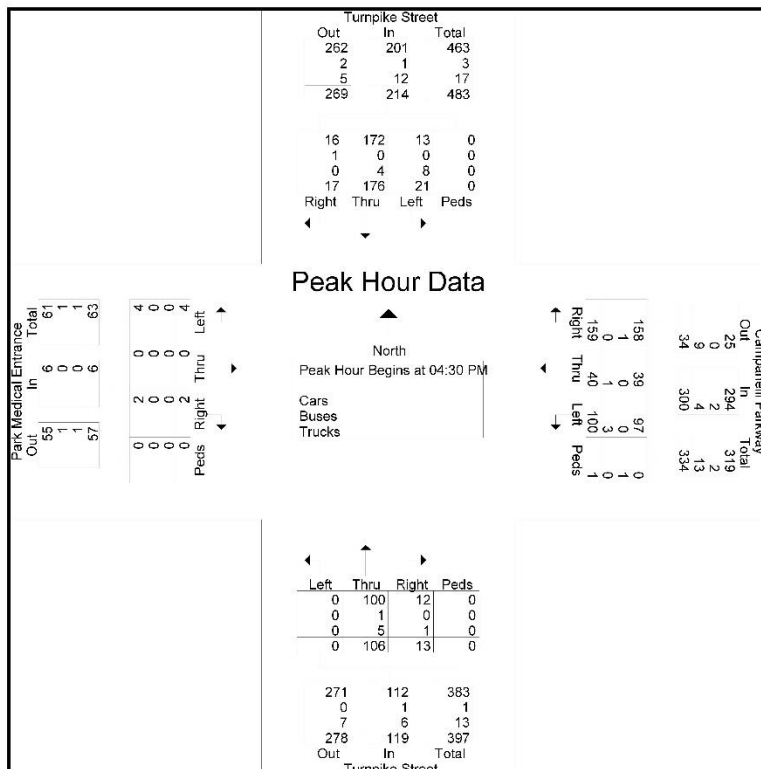
Road Safety Audit - Park Street (Route 27) at Turnpike Street (including Campanelli Parkway and Surrounding Area), Town of Stoughton - Prepared by Old Colony Planning Council **FINAL**



Community: Stoughton
Weather: Clear
Board # & Staff: DB-400 (4) / SB
Traffic Control: Stop Sign

File Name : Turnpike Street & Campanelli Parkway_PM
Site Code : 285
Start Date : 9/18/2019
Page No : 4

	Turnpike Street Southbound					Campanelli Parkway Westbound					Turnpike Street Northbound					Park Medical Entrance Eastbound					
Start Time	Right	Thru	Left	Peds	App. Total	Right	Thru	Left	Peds	App. Total	Right	Thru	Left	Peds	App. Total	Right	Thru	Left	Peds	App. Total	Int. Total
Peak Hour Analysis From 04:00 PM to 05:45 PM - Peak 1 of 1																					
Peak Hour for Entire Intersection Begins at 04:30 PM																					
04:30 PM	1	42	7	0	50	31	11	25	1	68	5	35	0	0	40	0	0	1	0	1	159
04:45 PM	7	53	7	0	67	26	4	22	0	52	3	16	0	0	19	0	0	0	0	0	138
05:00 PM	3	42	3	0	48	65	20	31	0	116	5	30	0	0	35	1	0	2	0	3	202
05:15 PM	6	39	4	0	49	37	5	22	0	64	0	25	0	0	25	1	0	1	0	2	140
Total Volume	17	176	21	0	214	159	40	100	1	300	13	106	0	0	119	2	0	4	0	6	639
% App. Total	7.9	82.2	9.8	0		53	13.3	33.3	0.3		10.9	89.1	0	0		33.3	0	66.7	0		
PHF	.607	.830	.750	.000		.799	.612	.500	.806	.250	.647	.650	.757	.000	.000	.744	.500	.000	.500	.000	.791
Cars	16	172	13	0	201	158	39	97	0	294	12	100	0	0	112	2	0	4	0	6	613
% Cars	94.1	97.7	61.9	0	93.9	99.4	97.5	97.0	0	98.0	92.3	94.3	0	0	94.1	100	0	100	0	100	95.9
Buses	1	0	0	0	1	1	0	0	1	2	0	1	0	0	1	0	0	0	0	0	4
% Buses	5.9	0	0	0	0.5	0.6	0	0	100	0.7	0	0.9	0	0	0.8	0	0	0	0	0	0.6
Trucks	0	4	8	0	12	0	1	3	0	4	1	5	0	0	6	0	0	0	0	0	22
% Trucks	0	2.3	38.1	0	5.6	0	2.5	3.0	0	1.3	7.7	4.7	0	0	5.0	0	0	0	0	0	3.4





Old Colony Planning Council

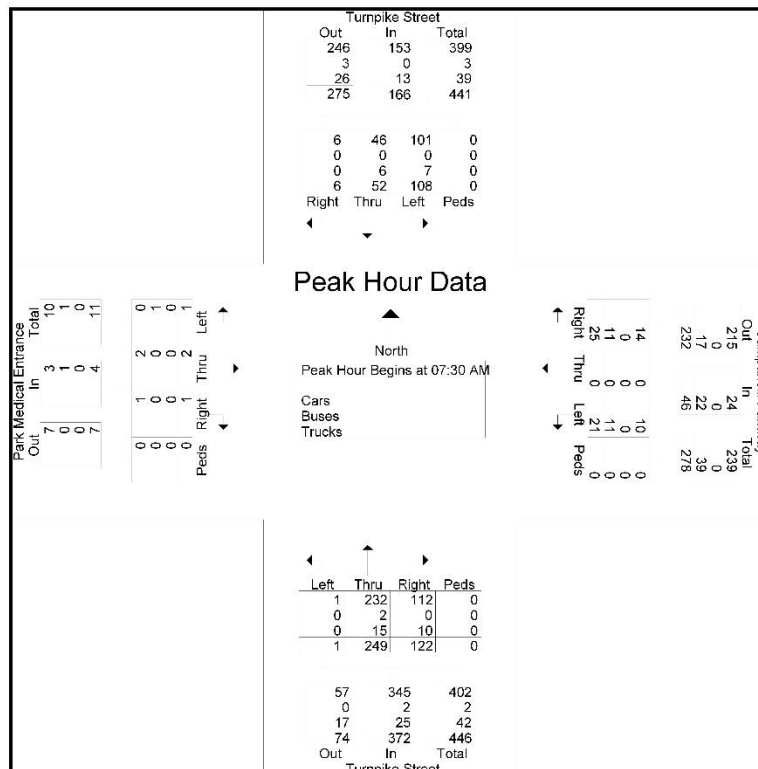
70 School Street
Brockton, MA 02301
(508) 583-1833

www.ocpcrpa.org

Community: Stoughton
Weather: Clear
Board # & Staff: DB-400 (4) / SB
Traffic Control: Stop Sign

File Name : Turnpike Street & Campanelli Parkway_AM
Site Code : 285
Start Date : 9/17/2019
Page No : 4

Turnpike Street Southbound					Campanelli Parkway Westbound					Turnpike Street Northbound					Park Medical Entrance Eastbound						
Start Time	Right	Thru	Left	Peds	App. Total	Right	Thru	Left	Peds	App. Total	Right	Thru	Left	Peds	App. Total	Right	Thru	Left	Peds	App. Total	Int. Total
Peak Hour Analysis From 07:00 AM to 08:45 AM - Peak 1 of 1																					
Peak Hour for Entire Intersection Begins at 07:30 AM																					
07:30 AM	1	13	18	0	32	8	0	4	0	12	20	72	0	0	92	1	1	0	0	2	138
07:45 AM	0	13	28	0	41	8	0	6	0	14	36	69	0	0	105	0	1	0	0	1	161
08:00 AM	3	13	34	0	50	4	0	6	0	10	29	53	0	0	82	0	0	1	0	1	143
08:15 AM	2	13	28	0	43	5	0	5	0	10	37	55	1	0	93	0	0	0	0	0	146
Total Volume	6	52	108	0	166	25	0	21	0	46	122	249	1	0	372	1	2	1	0	4	588
% App. Total	3.6	31.3	65.1	0		54.3	0	45.7	0		32.8	66.9	0.3	0		25	50	25	0		
PHF	.500	1.00	.794	.000	.830	.781	.000	.875	.000	.821	824	865	.250	.000	.886	.250	.500	.250	.000	.500	.913
Cars	6	46	101	0	153	14	0	10	0	24	112	232	1	0	345	1	2	0	0	3	525
% Cars	100	88.5	93.5	0	92.2	56.0	0	47.6	0	52.2	91.8	93.2	100	0	92.7	100	100	0	0	75.0	89.3
Buses	0	0	0	0	0	0	0	0	0	0	0	2	0	0	2	0	0	1	0	1	3
% Buses	0	0	0	0	0	0	0	0	0	0	0	0.8	0	0	0.5	0	0	100	0	25.0	0.5
Trucks	0	6	7	0	13	11	0	11	0	22	10	15	0	0	25	0	0	0	0	0	60
% Trucks	0	11.5	6.5	0	7.8	44.0	0	52.4	0	47.8	8.2	6.0	0	0	6.7	0	0	0	0	0	10.2



Old Colony Planning Council																
70 School Street Brockton, MA 02301 (508) 583-1833 www.ocpcpra.org																
Community: Stoughton Com#_UR/FC: 285_U6 Recorder #: 25310 Layout: L6 Basic (2')																
Station ID: Site Code: 285 Date Start: 18-Sep-19 Date End: 19-Sep-19 Tumpike St, north of Park St (27)																
Start Time	16-Sep-19		Tue		Wed		Thu		Fri		Sat		Sun		Week Average	
	NB	SB	NB	SB	NB	SB	NB	SB	NB	SB	NB	SB	NB	SB	NB	SB
12:00 AM	*	*	*	*	12	23	18	28	*	SB	NB	SB	NB	SB	15	26
01:00	*	*	*	*	3	24	9	17	*	*	*	*	*	*	6	20
02:00	*	*	*	*	6	6	7	9	*	*	*	*	*	*	6	8
03:00	*	*	*	*	7	10	6	13	*	*	*	*	*	*	6	12
04:00	*	*	*	*	33	8	28	9	*	*	*	*	*	*	30	8
05:00	*	*	*	*	209	20	201	18	*	*	*	*	*	*	205	19
06:00	*	*	*	*	480	32	484	33	*	*	*	*	*	*	482	53
07:00	*	*	*	*	462	74	374	73	*	*	*	*	*	*	418	74
08:00	*	*	*	*	338	88	301	86	*	*	*	*	*	*	320	87
09:00	*	*	*	*	150	90	176	118	*	*	*	*	*	*	163	104
10:00	*	*	*	*	110	106	145	101	*	*	*	*	*	*	128	104
11:00	*	*	*	*	141	155	137	114	*	*	*	*	*	*	139	134
12:00 PM	*	*	*	*	184	174	211	219	*	*	*	*	*	*	198	196
01:00	*	*	*	*	199	156	190	165	*	*	*	*	*	*	194	160
02:00	*	*	*	*	148	179	164	164	*	*	*	*	*	*	156	172
03:00	*	*	*	*	139	191	141	192	*	*	*	*	*	*	140	192
04:00	*	*	*	*	123	234	120	238	*	*	*	*	*	*	122	236
05:00	*	*	*	*	124	225	103	200	*	*	*	*	*	*	114	212
06:00	*	*	*	*	127	126	104	161	*	*	*	*	*	*	116	144
07:00	*	*	*	*	93	98	94	109	*	*	*	*	*	*	94	104
08:00	*	*	*	*	69	66	67	63	*	*	*	*	*	*	68	64
09:00	*	*	*	*	36	37	47	47	*	*	*	*	*	*	42	42
10:00	*	*	*	*	26	27	20	31	*	*	*	*	*	*	23	29
11:00	*	*	*	*	16	28	16	28	*	*	*	*	*	*	17	28
Lane	0	0	0	0	3237	2207	3163	2256	0	0	0	0	0	0	3202	2233
Day	0		0		5444		5419		0		0		0		5435	2130
AM Peak	-	-	-	-	06:00	11:00	06:00	09:00	-	-	-	-	-	-	06:00	11:00
Vol.	-	-	-	-	480	155	484	118	-	-	-	-	-	-	482	134
PM Peak	-	-	-	-	13:00	16:00	12:00	16:00	-	-	-	-	-	-	12:00	16:00</

Road Safety Audit - Park Street (Route 27) at Turnpike Street (including Campanelli Parkway and Surrounding Area), Town of Stoughton - Prepared by Old Colony Planning Council **FINAL**

Old Colony Planning Council
70 School Street
Brockton, MA 02301
(508) 583-1833
www.ocpcrpa.org

Page 6

Community: Stoughton
Com# UR/FC: 285_U6
Recorder #: 25310
Layout: L6 Basic (2)

Station ID:
Site Code: 285
Date Start: 18-Sep-19
Date End: 19-Sep-19
Turnpike St. north of Park St (27)

NB, SB																	
Start Time	Motorc	Cars & Trailer	2 Axle Long	Buses	2 Axle 6 Tire	3 Axle Single	4 Axle Single	<5 Axl Double	5 Axle Double	>6 Axl Double	<6 Axl Multi	6 Axle Multi	>6 Axl Multi	Total	Truck Total		
09/19/19	1	34	7	0	3	1	0	0	0	0	0	0	0	46	4		
01:00	1	16	4	4	1	0	0	0	0	0	0	0	0	26	5		
02:00	3	7	1	0	5	0	0	0	0	0	0	0	0	16	5		
03:00	0	11	0	6	2	0	0	0	0	0	0	0	0	19	8		
04:00	1	18	12	1	4	0	0	0	1	0	0	0	0	37	6		
05:00	1	122	51	6	37	0	0	1	1	0	0	0	0	219	45		
06:00	7	325	114	15	68	3	0	0	3	0	0	0	0	535	89		
07:00	12	288	79	11	42	5	0	7	3	0	0	0	0	447	68		
08:00	10	237	81	10	37	7	0	3	1	0	0	0	0	386	58		
09:00	13	188	48	7	29	5	0	2	1	0	0	0	0	293	44		
10:00	9	140	49	9	21	5	0	6	6	0	0	0	0	245	47		
11:00	9	166	47	7	15	5	0	0	2	0	0	0	0	251	29		
12 PM	15	289	73	7	37	4	0	3	2	0	0	0	0	430	53		
13:00	6	234	78	8	24	1	0	1	3	0	0	0	0	355	37		
14:00	7	229	63	4	15	1	0	4	3	0	0	0	0	326	27		
15:00	4	230	55	14	17	4	0	2	4	0	0	0	0	330	41		
16:00	15	255	69	3	7	2	0	4	1	0	0	0	0	356	17		
17:00	15	217	45	4	14	4	0	2	0	0	0	0	0	301	24		
18:00	2	210	40	1	10	1	0	1	0	0	0	0	0	265	13		
19:00	4	156	30	0	9	1	0	2	1	0	0	0	0	203	13		
20:00	6	90	22	2	9	1	0	1	0	0	0	0	0	130	13		
21:00	1	73	11	2	6	1	0	0	0	0	0	0	0	84	9		
22:00	1	41	9	0	0	0	0	0	0	0	0	0	0	51	0		
23:00	0	36	6	0	2	0	0	0	0	0	0	0	0	44	2		
Total	142	3612	994	121	414	51	0	38	32	0	0	0	0	5405	657		
Percent	2.6%	66.8%	18.4%	2.2%	7.7%	0.9%	0.0%	0.7%	0.6%	0.0%	0.0%	0.0%	0.0%		12.2%		
AM Peak	09:00	06:00	06:00	06:00	06:00	08:00		07:00	10:00					06:00	06:00		
Vol.	13	325	114	15	68	7		7	6					535	89		
PM Peak	12:00	12:00	13:00	15:00	12:00	12:00		14:00	15:00					12:00	12:00		
Vol.	15	289	78	14	37	4		4	4					430	53		
Grand Total	265	7264	2023	237	795	105	1	85	61	0	0	0	0	10836	1284		
Percent	2.4%	67.0%	18.7%	2.2%	7.3%	1.0%	0.0%	0.8%	0.6%	0.0%	0.0%	0.0%	0.0%		11.8%		

Road Safety Audit - Park Street (Route 27) at Turnpike Street (including Campanelli Parkway and Surrounding Area), Town of Stoughton - Prepared by Old Colony Planning Council **FINAL**

Old Colony Planning Council
70 School Street
Brockton, MA 02301
(508) 583-1833
www.ocpcrpa.org

Page 6

Community: Stoughton
Com#_UR/FC: 285_U6
Recorder #: 25310
Layout: L6 Basic (2')

Station ID:
Site Code: 285
Date Start: 18-Sep-19
Date End: 19-Sep-19
Turnpike St. north of Park St (27)

NB, SB

Start Time	1	36	41	46	51	56	61	66	71	76	81	86	91	96	Total
09/19/19	28	13	3	2	0	0	0	0	0	0	0	0	0	0	46
01:00	19	5	2	0	0	0	0	0	0	0	0	0	0	0	28
02:00	11	3	2	0	0	0	0	0	0	0	0	0	0	0	16
03:00	10	6	1	2	0	0	0	0	0	0	0	0	0	0	19
04:00	24	7	3	3	0	0	0	0	0	0	0	0	0	0	37
05:00	98	83	32	5	0	0	0	0	0	0	0	0	0	0	219
06:00	210	237	80	10	0	0	0	0	0	0	0	0	0	0	537
07:00	182	174	75	14	2	0	0	0	0	0	0	0	0	0	447
08:00	154	140	83	10	0	0	0	0	0	0	0	0	0	0	387
09:00	154	98	37	5	0	0	0	0	0	0	0	0	0	0	294
10:00	140	85	16	4	1	0	0	0	0	0	0	0	0	0	246
11:00	138	80	19	4	0	0	0	0	0	0	0	0	0	0	251
12 PM	276	131	19	3	1	0	0	0	0	0	0	0	0	0	430
13:00	223	102	29	1	0	0	0	0	0	0	0	0	0	0	355
14:00	212	91	18	6	0	1	0	0	0	0	0	0	0	0	328
15:00	208	96	28	0	1	0	0	0	0	0	0	0	0	0	333
16:00	245	92	17	2	1	0	0	0	0	0	1	0	0	0	358
17:00	217	62	20	2	2	0	0	0	0	0	0	0	0	0	303
18:00	148	91	24	2	0	0	0	0	0	0	0	0	0	0	265
19:00	147	45	7	3	1	0	0	0	0	0	0	0	0	0	203
20:00	83	40	5	2	0	0	0	0	0	0	0	0	0	0	130
21:00	51	31	11	1	0	0	0	0	0	0	0	0	0	0	94
22:00	28	13	7	3	0	0	0	0	0	0	0	0	0	0	51
23:00	23	13	7	0	0	1	0	0	0	0	0	0	0	0	44
Total	3030	1748	545	84	9	2	0	0	0	0	1	0	0	0	5419

Daily
15th Percentile : 9 MPH
50th Percentile : 31 MPH
85th Percentile : 39 MPH
95th Percentile : 43 MPH
Mean Speed/Average : 28 MPH
10 MPH Pace Speed : 36-45 MPH
Number in Pace : 2293
Percent in Pace : 42.3%
Number of Vehicles > 30 MPH : 2822
Percent of Vehicles > 30 MPH : 52.1%

Grand Total	6134	3497	1058	148	20	3	1	0	0	0	1	0	0	0	10863
-------------	------	------	------	-----	----	---	---	---	---	---	---	---	---	---	-------

Overall
15th Percentile : 9 MPH
50th Percentile : 30 MPH
85th Percentile : 39 MPH
95th Percentile : 43 MPH
Mean Speed/Average : 27 MPH
10 MPH Pace Speed : 36-45 MPH
Number in Pace : 4555
Percent in Pace : 41.9%
Number of Vehicles > 30 MPH : 5605
Percent of Vehicles > 30 MPH : 51.6%

Road Safety Audit - Park Street (Route 27) at Turnpike Street (including Campanelli Parkway and Surrounding Area), Town of Stoughton - Prepared by Old Colony Planning Council **FINAL**

Old Colony Planning Council
70 School Street
Brockton, MA 02301
(508) 583-1833
www.ocpcrpa.org

Page 6

Community: Stoughton
Com#_UR/FC: 285_U6
Recorder #: 25236
Layout: L6 Basic (2')

Station ID:
Site Code: 285
Date Start: 18-Sep-19
Date End: 19-Sep-19
Turnpike St, north of Campanelli Pkwy

NB, SB	Start Time	Motors	Cars & Trailer	2 Axle Long	Buses	2 Axle 6 Tire	3 Axle Single	4 Axle Single	<5 Axl Double	5 Axle Double	>6 Axl Double	<6 Axl Multi	6 Axle Multi	>6 Axl Multi	Total	Truck Total
	09/19/19	1	20	3	2	1	1	0	0	1	0	0	0	0	29	5
	01:00	0	10	3	1	2	0	0	0	0	0	0	0	0	16	3
	02:00	0	5	3	0	0	0	0	0	0	0	0	0	0	8	0
	03:00	0	12	4	2	2	0	0	0	0	0	0	0	0	20	4
	04:00	1	13	7	6	6	0	0	1	0	0	0	0	0	34	13
	05:00	2	131	58	5	38	0	0	1	1	0	0	0	0	238	46
	06:00	3	301	98	31	60	2	0	2	3	0	0	0	0	500	98
	07:00	6	270	71	11	37	4	0	4	2	0	0	0	0	405	58
	08:00	3	240	58	11	39	1	0	6	3	0	0	0	0	361	60
	09:00	5	179	63	8	27	4	0	2	1	0	0	0	0	289	42
	10:00	4	130	40	7	34	2	1	4	5	0	0	0	0	227	53
	11:00	2	145	49	6	33	2	0	1	2	0	0	0	0	240	44
	12 PM	5	215	65	8	34	2	0	3	1	0	0	0	0	333	48
	13:00	4	206	68	9	35	1	0	3	1	0	0	0	0	327	49
	14:00	5	211	69	16	38	3	0	3	3	0	0	0	0	348	63
	15:00	5	220	75	15	34	1	0	2	0	0	0	0	0	362	52
	16:00	10	250	80	9	26	1	0	4	2	0	0	0	0	382	42
	17:00	5	317	75	7	36	3	0	3	1	0	0	0	0	447	50
	18:00	2	190	51	6	13	0	0	1	0	0	0	0	0	263	20
	19:00	2	153	36	1	9	1	0	1	1	0	0	0	0	204	13
	20:00	1	86	21	2	6	0	0	0	0	0	0	0	0	115	7
	21:00	1	58	22	1	8	0	0	0	0	0	0	0	0	91	9
	22:00	2	37	11	1	2	1	0	0	0	0	0	0	0	64	4
	23:00	1	31	6	1	1	1	0	0	0	0	0	0	0	41	3
Total		70	3431	1037	168	621	30	1	41	27	0	0	0	0	5324	788
Percent		1.3%	64.4%	19.5%	3.1%	9.8%	0.6%	0.0%	0.8%	0.5%	0.0%	0.0%	0.0%	0.0%		14.8%
AM Peak	07:00	06:00	06:00	06:00	06:00	07:00	10:00	08:00	10:00						06:00	06:00
Vol.	6	301	98	31	60	4	1	6	5						500	98
PM Peak	16:00	17:00	16:00	14:00	14:00	14:00		16:00	14:00						17:00	14:00
Vol.	10	317	80	16	38	3		4	3						447	63
Grand Total		132	6948	2137	330	979	57	2	77	55	0	0	0	0	10717	1500
Percent		1.2%	64.8%	19.9%	3.1%	9.1%	0.5%	0.0%	0.7%	0.5%	0.0%	0.0%	0.0%	0.0%		14.0%

Road Safety Audit - Park Street (Route 27) at Turnpike Street (including Campanelli Parkway and Surrounding Area), Town of Stoughton - Prepared by Old Colony Planning Council **FINAL**

Old Colony Planning Council
70 School Street
Brockton, MA 02301
(508) 583-1833
www.ocpcrpa.org

Page 6

Community: Stoughton
 Com#_UR/FC: 285_U6
 Recorder #: 25236
 Layout: L6 Basic (2')

Station ID:
 Site Code: 285
 Date Start: 18-Sep-19
 Date End: 19-Sep-19
 Turnpike St, north of Campanelli Pkwy

NB, SB	1	36	41	46	51	56	61	66	71	76	81	86	91	96	
Start Time	35	40	45	50	55	60	65	70	75	80	85	90	95	999	Total
09/19/19	14	11	1	2	1	0	0	0	0	0	0	0	0	0	29
01:00	10	3	2	1	0	0	0	0	0	0	0	0	0	0	18
02:00	2	2	2	2	0	0	0	0	0	0	0	0	0	0	8
03:00	6	10	2	1	1	0	0	0	0	0	0	0	0	0	20
04:00	20	5	3	3	2	0	1	0	0	0	0	0	0	0	34
05:00	70	84	61	20	3	0	0	0	0	0	0	0	0	0	238
06:00	162	182	132	24	2	0	0	0	0	0	0	0	0	0	502
07:00	132	146	111	14	2	0	0	0	0	0	0	0	0	0	405
08:00	132	118	85	21	5	0	0	0	0	0	0	0	0	0	381
09:00	95	106	74	12	2	0	0	0	0	0	0	0	0	0	289
10:00	83	82	51	10	1	0	0	0	0	0	0	0	0	0	227
11:00	95	102	33	8	1	1	0	0	0	0	0	0	0	0	240
12 PM	140	122	52	16	3	0	0	0	0	0	0	0	0	0	333
13:00	129	124	64	9	1	0	0	0	0	0	0	0	0	0	327
14:00	154	130	52	9	3	0	0	0	0	0	0	0	0	0	348
15:00	155	140	48	7	2	0	0	0	0	0	0	0	0	0	352
16:00	161	142	66	9	4	0	0	0	0	0	0	0	0	0	382
17:00	229	147	54	17	2	2	0	0	0	0	0	0	0	0	450
18:00	92	108	56	6	0	1	0	0	0	0	0	0	0	0	263
19:00	85	82	30	6	1	0	0	0	0	0	0	0	0	0	204
20:00	45	50	17	2	1	0	0	0	0	0	0	0	0	0	115
21:00	29	39	16	8	1	0	0	0	0	0	0	0	0	0	91
22:00	23	14	11	4	1	0	0	0	0	0	1	0	0	0	54
23:00	12	13	10	6	0	0	0	0	0	0	0	0	0	0	41
Total	2074	1962	1033	215	39	4	1	0	0	0	1	0	0	0	5329

Daily

15th Percentile :	13 MPH
50th Percentile :	36 MPH
85th Percentile :	42 MPH
95th Percentile :	44 MPH
Mean Speed(Average) :	32 MPH
10 MPH Pace Speed :	36-45 MPH
Number in Pace :	2995
Percent in Pace :	56.2%
Number of Vehicles > 30 MPH :	3551
Percent of Vehicles > 30 MPH :	66.6%

Grand Total	4294	3956	1991	422	62	7	2	0	0	0	1	0	0	1	10726
-------------	------	------	------	-----	----	---	---	---	---	---	---	---	---	---	-------

Overall

15th Percentile :	13 MPH
50th Percentile :	36 MPH
85th Percentile :	42 MPH
95th Percentile :	44 MPH
Mean Speed(Average) :	31 MPH
10 MPH Pace Speed :	36-45 MPH
Number in Pace :	5937
Percent in Pace :	55.4%
Number of Vehicles > 30 MPH :	7045
Percent of Vehicles > 30 MPH :	65.7%

Road Safety Audit - Park Street (Route 27) at Turnpike Street (including Campanelli Parkway and Surrounding Area), Town of Stoughton - Prepared by Old Colony Planning Council **FINAL**

Old Colony Planning Council
70 School Street
Brockton, MA 02301
(508) 583-1833
www.ocpcrpa.org

Page 6

Community: Stoughton
Com#_UR/FC: 285_U3
Recorder #: 32539
Layout: L6 Basic (2)

Station ID:
Site Code: 285
Date Start: 18-Sep-19
Date End: 19-Sep-19
Park St (27), south of Turnpike St

NB, SB	Start Time	Cars & Trailer	2 Axle Long	Buses	2 Axle 6 Tire	3 Axle Single	4 Axle Single	<5 Axl Double	5 Axle Double	>6 Axl Double	<6 Axl Multi	6 Axle Multi	>6 Axl Multi	Total	Truck Total
	09/19/19	0	130	10	1	5	0	0	1	0	0	0	0	147	7
	01:00	0	83	12	4	4	1	0	1	0	0	0	0	105	10
	02:00	1	42	9	1	2	1	0	2	0	0	0	0	58	6
	03:00	0	53	13	8	1	1	0	0	0	0	0	0	76	10
	04:00	1	163	31	4	2	3	0	0	2	0	0	0	206	11
	05:00	4	541	123	8	30	1	0	2	1	0	0	0	710	42
	06:00	30	1336	241	26	57	13	0	5	6	0	0	0	1714	107
	07:00	49	1362	260	16	52	14	0	8	11	0	0	0	1792	101
	08:00	64	1337	233	17	54	16	0	5	8	0	0	0	1734	100
	09:00	44	1103	204	20	60	11	1	8	7	0	0	0	1458	107
	10:00	19	943	153	20	55	7	1	11	12	0	0	0	1221	106
	11:00	27	961	168	16	51	6	0	7	6	0	0	0	1242	86
	12 PM	38	1158	174	17	68	6	1	4	7	0	0	0	1473	103
	13:00	41	1083	217	13	73	11	0	2	4	0	0	0	1444	103
	14:00	37	1148	212	7	74	9	0	5	8	0	0	0	1500	103
	15:00	37	1213	231	14	95	14	0	3	3	0	0	0	1610	129
	16:00	59	1322	222	5	83	9	0	8	1	0	0	0	1689	88
	17:00	62	1327	193	10	71	8	0	4	4	0	0	0	1679	97
	18:00	40	1161	153	4	44	6	0	2	0	0	0	0	1410	56
	19:00	25	925	121	1	30	3	0	5	2	0	0	0	1112	41
	20:00	6	665	89	1	27	1	0	4	0	0	0	0	803	33
	21:00	4	484	52	2	14	2	0	0	1	0	0	0	559	19
	22:00	1	302	41	1	6	0	0	0	2	0	0	0	353	9
	23:00	2	235	31	0	6	0	0	0	0	0	0	0	274	6
	Total	591	19097	3203	216	944	143	3	86	86	0	0	0	24369	1478
	Percent	2.4%	78.4%	13.1%	0.9%	3.9%	0.6%	0.0%	0.4%	0.4%	0.0%	0.0%	0.0%	6.1%	6.1%
AM	08:00	07:00	07:00	06:00	09:00	08:00	09:00	10:00	10:00					07:00	08:00
Peak	Vol.	64	1362	260	26	80	16	1	11	12				1792	107
PM	17:00	17:00	15:00	12:00	15:00	15:00	12:00	16:00	14:00					16:00	15:00
Peak	Vol.	62	1327	231	17	95	14	1	8	8				1689	129
Grand	Total	1163	37637	6327	412	1910	290	12	172	171	0	0	0	48064	2967
Percent		2.4%	78.3%	13.2%	0.9%	4.0%	0.6%	0.0%	0.4%	0.4%	0.0%	0.0%	0.0%	6.2%	6.2%

Road Safety Audit - Park Street (Route 27) at Turnpike Street (including Campanelli Parkway and Surrounding Area), Town of Stoughton - Prepared by Old Colony Planning Council **FINAL**

Old Colony Planning Council
70 School Street
Brockton, MA 02301
(508) 583-1833
www.ocpcrpa.org

Page 6

Community: Stoughton
Com#_UR/FC: 285_U3
Recorder #: 32539
Layout: L6 Basic (2')

Station ID:
Site Code: 285
Date Start: 18-Sep-19
Date End: 19-Sep-19
Park St (27), south of Turnpike St

NB, SB	1	36	41	46	51	56	61	66	71	76	81	86	91	96	
Start Time	35	40	45	50	55	60	65	70	75	80	85	90	95	999	Total
09/19/19	25	43	41	23	12	2	0	0	1	0	0	0	0	0	147
01:00	20	37	28	7	10	2	1	0	0	0	0	0	0	0	105
02:00	7	18	18	14	1	0	0	0	0	0	0	0	0	0	58
03:00	9	20	22	14	9	0	1	0	1	0	0	0	0	0	76
04:00	23	58	72	34	15	2	2	0	0	0	0	0	0	0	206
05:00	118	298	211	60	17	8	0	0	0	0	0	0	0	0	713
06:00	1027	442	188	63	18	1	0	0	0	0	0	0	0	0	1719
07:00	782	572	298	112	29	1	1	0	0	0	0	0	0	0	1798
08:00	641	582	368	128	16	5	0	0	0	0	0	0	0	0	1738
09:00	565	460	313	106	15	3	1	2	0	0	0	0	0	0	1465
10:00	289	433	369	115	14	2	1	0	0	0	0	0	0	0	1224
11:00	352	446	322	101	22	2	0	1	0	0	1	0	0	0	1248
12 PM	517	498	341	104	13	1	0	0	0	0	0	0	0	0	1476
13:00	548	483	287	124	21	2	1	1	0	0	0	0	0	0	1448
14:00	576	510	311	80	18	2	4	0	0	0	1	0	0	0	1503
15:00	582	566	359	94	4	5	2	0	1	0	0	0	1	1	1815
16:00	640	605	354	81	9	4	0	0	0	0	0	0	0	0	1696
17:00	882	448	286	56	4	1	1	0	0	0	0	0	0	0	1690
18:00	475	467	363	95	8	1	1	0	0	1	0	1	0	0	1412
19:00	408	417	246	37	4	2	0	0	0	0	0	0	0	0	1114
20:00	248	310	175	61	7	2	0	0	0	0	0	0	0	0	803
21:00	115	208	171	55	10	3	0	0	0	0	0	0	0	0	580
22:00	59	137	114	35	6	2	0	0	0	0	0	0	0	0	353
23:00	44	78	83	52	14	3	0	0	0	0	0	0	0	0	274
Total	8960	8115	5320	1649	296	56	16	4	3	1	2	1	1	18	24442

Daily
15th Percentile : 14 MPH
50th Percentile : 37 MPH
85th Percentile : 43 MPH
95th Percentile : 47 MPH
Mean Speed(Average) : 33 MPH
10 MPH Pace Speed : 36-45 MPH
Number in Pace : 13435
Percent in Pace : 55.0%
Number of Vehicles > 40 MPH : 7367
Percent of Vehicles > 40 MPH : 30.1%

Grand Total	17441	18467	10293	3218	616	110	26	7	6	5	3	2	1	29	48224
-------------	-------	-------	-------	------	-----	-----	----	---	---	---	---	---	---	----	-------

Overall
15th Percentile : 14 MPH
50th Percentile : 37 MPH
85th Percentile : 43 MPH
95th Percentile : 47 MPH
Mean Speed(Average) : 33 MPH
10 MPH Pace Speed : 36-45 MPH
Number in Pace : 26760
Percent in Pace : 55.5%
Number of Vehicles > 40 MPH : 14316
Percent of Vehicles > 40 MPH : 28.7%

Road Safety Audit - Park Street (Route 27) at Turnpike Street (including Campanelli Parkway and Surrounding Area), Town of Stoughton - Prepared by Old Colony Planning Council **FINAL**

Community: Stoughton Com#_UR/FC: 285_U3 Recorder #: 32539 Layout: L6 Basic (2')														Old Colony Planning Council 70 School Street Brockton, MA 02301 (508) 583-1833 www.ocpcrpa.org														Page 1 Station ID: Site Code: 285 Date Start: 18-Sep-19 Date End: 19-Sep-19 Park St (27), south of Turnpike St	
Start Time	16-Sep-19		Tue		Wed		Thu		Fri		Sat		Sun		Week Average														
	NB	SB	NB	SB	NB	SB	NB	SB	NB	SB	NB	SB	NB	SB	NB	SB													
12:00 AM	*	*	*	*	51	78	64	83	*	*	*	*	*	*	58	80													
01:00	*	*	*	*	23	67	43	62	*	*	*	*	*	*	33	64													
02:00	*	*	*	*	35	29	28	30	*	*	*	*	*	*	32	30													
03:00	*	*	*	*	43	29	35	41	*	*	*	*	*	*	39	35													
04:00	*	*	*	*	139	49	144	62	*	*	*	*	*	*	142	56													
05:00	*	*	*	*	581	159	574	139	*	*	*	*	*	*	578	149													
06:00	*	*	*	*	1248	353	1373	346	*	*	*	*	*	*	1310	350													
07:00	*	*	*	*	1280	565	1217	579	*	*	*	*	*	*	1248	572													
08:00	*	*	*	*	1087	636	1126	613	*	*	*	*	*	*	1106	624													
09:00	*	*	*	*	649	552	819	646	*	*	*	*	*	*	734	599													
10:00	*	*	*	*	586	632	601	623	*	*	*	*	*	*	594	628													
11:00	*	*	*	*	567	626	634	614	*	*	*	*	*	*	600	620													
12:00 PM	*	*	*	*	732	761	718	760	*	*	*	*	*	*	725	760													
01:00	*	*	*	*	717	744	748	700	*	*	*	*	*	*	732	722													
02:00	*	*	*	*	700	770	697	806	*	*	*	*	*	*	698	788													
03:00	*	*	*	*	687	961	661	954	*	*	*	*	*	*	674	958													
04:00	*	*	*	*	701	1022	698	998	*	*	*	*	*	*	700	1010													
05:00	*	*	*	*	673	1020	628	1062	*	*	*	*	*	*	650	1041													
06:00	*	*	*	*	599	762	584	828	*	*	*	*	*	*	592	795													
07:00	*	*	*	*	440	571	488	626	*	*	*	*	*	*	464	598													
08:00	*	*	*	*	378	343	409	394	*	*	*	*	*	*	394	368													
09:00	*	*	*	*	279	224	272	288	*	*	*	*	*	*	276	256													
10:00	*	*	*	*	191	173	174	179	*	*	*	*	*	*	182	176													
11:00	*	*	*	*	117	153	117	157	*	*	*	*	*	*	117	155													
Lane	0	0	0	0	12503	11279	12852	11590	0	0	0	0	0	0	12678	11434													
Day	0		0		23782		24442		0		0		0		24112														
AM Peak	-	-	-	-	07:00	08:00	06:00	09:00	-	-	-	-	-	-	06:00	10:00													
Vol	-	-	-	-	1280	636	1373	646	-	-	-	-	-	-	1310	628													
PM Peak	-	-	-	-	12:00	16:00	13:00	17:00	-	-	-	-	-	-	13:00	17:00													
Vol	-	-	-	-	732	1022	748	1062	-	-	-	-	-	-	732	1041													
Comb. Total	0		0		23782		24442		0		0		0		24112														

Road Safety Audit - Park Street (Route 27) at Turnpike Street (including Campanelli Parkway and Surrounding Area), Town of Stoughton - Prepared by Old Colony Planning Council **FINAL**

Old Colony Planning Council
70 School Street
Brockton, MA 02301
(508) 583-1833
www.ocpcrpa.org

Page 6

Community: Stoughton
Com#_UR/FC: 285_U3
Recorder #: 32540
Layout: L6 Basic (2)

Station ID:
Site Code: 285
Date Start: 18-Sep-19
Date End: 19-Sep-19
Park St (27), north of Turnpike St

NB, SB		Cars & Trailer	2 Axle Long	Buses	2 Axle 6 Tire	3 Axle Single	4 Axle Single	<5 Axl Double	5 Axle Double	>6 Axl Double	<6 Axl Multi	6 Axle Multi	>6 Axl Multi	Total	Truck Total
Start Time	Motorc														
09/19/19	0	108	11	1	3	0	0	0	0	0	0	0	0	123	4
01:00	0	73	12	0	5	1	0	0	0	0	0	0	0	91	6
02:00	0	36	13	1	1	1	0	0	0	0	0	0	0	52	3
03:00	1	57	12	2	1	0	0	0	0	0	0	0	0	73	3
04:00	2	152	31	5	7	3	0	1	1	0	0	0	0	202	17
05:00	4	408	106	4	28	0	0	2	1	0	0	0	0	554	36
06:00	22	976	217	17	58	7	0	3	4	0	0	0	0	1304	89
07:00	24	1143	253	8	64	7	0	5	3	1	0	0	0	1508	98
08:00	51	1104	264	11	53	17	0	4	9	0	0	0	0	1513	94
09:00	22	939	226	12	65	14	0	7	8	0	0	0	0	1293	106
10:00	21	810	159	16	41	6	2	5	5	0	0	0	0	1065	75
11:00	26	850	173	11	42	8	1	4	3	0	0	0	0	1118	68
12 PM	13	932	173	13	46	4	0	4	8	0	0	0	0	1193	75
13:00	29	928	213	8	52	8	1	2	3	0	0	0	0	1244	74
14:00	33	1030	225	2	58	10	1	2	5	0	0	0	0	1366	78
15:00	25	1104	258	15	61	9	0	7	4	0	0	0	0	1483	96
16:00	40	1192	230	3	55	10	0	1	1	0	0	0	0	1532	70
17:00	50	1211	229	4	41	12	1	0	1	0	0	0	0	1549	59
18:00	23	1054	173	6	44	6	0	3	1	0	0	0	0	1310	60
19:00	19	855	136	2	23	5	0	2	1	0	0	0	0	1043	33
20:00	12	617	113	1	21	2	0	0	0	0	0	0	0	766	24
21:00	2	456	67	0	7	1	0	0	0	0	0	0	0	533	8
22:00	3	303	50	1	7	0	0	0	2	0	0	0	0	366	10
23:00	1	235	26	0	5	0	0	0	0	0	0	0	0	267	5
Total	423	18574	3369	143	789	131	6	52	60	1	0	0	0	21548	1182
Percent	2.0%	76.9%	15.6%	0.7%	3.7%	0.6%	0.0%	0.2%	0.3%	0.0%	0.0%	0.0%	0.0%		5.5%
AM Peak	08:00	07:00	08:00	08:00	09:00	08:00	10:00	09:00	08:00	07:00				08:00	09:00
Vol.	51	1143	264	17	85	17	2	7	9	1				1513	106
PM Peak	17:00	17:00	15:00	15:00	15:00	17:00	13:00	15:00	12:00					17:00	15:00
Vol.	50	1211	258	15	61	12	1	7	8					1549	96
Grand Total	789	32492	6569	282	1766	240	15	98	126	1	0	0	0	42378	2528
Percent	1.9%	76.7%	15.5%	0.7%	4.2%	0.6%	0.0%	0.2%	0.3%	0.0%	0.0%	0.0%	0.0%		6.0%

Road Safety Audit - Park Street (Route 27) at Turnpike Street (including Campanelli Parkway and Surrounding Area), Town of Stoughton - Prepared by Old Colony Planning Council **FINAL**

Old Colony Planning Council
70 School Street
Brockton, MA 02301
(508) 583-1833
www.ocpcrpa.org

Page 6

Community: Stoughton
Com#_UR/FC: 285_U3
Recorder #: 32540
Layout: L6 Basic (2')

Station ID:
Site Code: 285
Date Start: 18-Sep-19
Date End: 19-Sep-19
Park St (27), north of Turnpike St

NB, SB

Start Time	1	36	41	46	51	56	61	66	71	76	81	86	91	96	Total
	35	40	45	50	55	60	65	70	75	80	85	90	95	999	
09/19/19	25	32	41	21	4	0	0	0	0	0	0	0	0	0	123
01:00	20	30	25	11	4	0	1	0	0	0	0	0	0	0	91
02:00	6	18	17	7	4	0	0	0	0	0	0	0	0	0	52
03:00	20	18	22	10	3	0	0	0	0	0	0	0	0	0	73
04:00	43	52	50	39	9	7	1	1	0	0	0	0	0	0	202
05:00	120	153	182	87	11	1	0	1	0	0	0	0	0	0	555
06:00	405	412	401	83	3	0	0	1	0	0	0	0	0	0	1305
07:00	528	508	407	69	1	0	0	0	0	0	0	0	0	0	1513
08:00	613	520	314	67	3	2	0	0	0	0	0	1	0	0	1520
09:00	508	507	239	40	3	1	0	0	0	0	1	0	0	0	1299
10:00	349	439	229	45	6	0	0	0	0	0	0	0	0	0	1068
11:00	388	448	235	35	5	2	0	0	0	0	0	0	0	0	1124
12 PM	487	433	233	40	5	0	0	0	0	0	0	0	0	1	1199
13:00	472	465	271	38	2	0	0	0	0	0	0	0	0	0	1248
14:00	770	408	166	23	1	1	0	0	0	0	0	0	0	2	1371
15:00	893	548	219	23	6	1	0	0	0	0	0	0	0	0	1490
16:00	656	585	280	34	0	0	0	1	0	0	0	0	0	0	1536
17:00	837	487	204	21	0	1	0	1	0	0	0	0	0	2	1553
18:00	580	474	217	42	3	0	0	0	0	0	0	0	0	0	1316
19:00	461	424	138	18	1	2	0	0	0	1	0	0	0	0	1045
20:00	320	286	131	25	3	1	0	0	0	0	0	0	0	0	766
21:00	158	209	138	30	1	1	0	0	0	0	0	0	0	0	533
22:00	109	142	93	15	5	1	1	0	0	0	0	0	0	0	388
23:00	57	98	74	32	5	1	0	0	0	0	0	0	0	0	297
Total	8634	7676	4324	855	88	22	3	5	0	1	1	1	0	5	21615

Daily
15th Percentile : 13 MPH
50th Percentile : 36 MPH
85th Percentile : 42 MPH
95th Percentile : 44 MPH
Mean Speed(Average) : 32 MPH
10 MPH Pace Speed : 36-45 MPH
Number in Pace : 12000
Percent in Pace : 55.5%
Number of Vehicles > 40 MPH : 5305
Percent of Vehicles > 40 MPH : 24.5%

Grand Total	18917	14986	8649	1709	203	39	4	5	0	3	2	2	0	10	42509
-------------	-------	-------	------	------	-----	----	---	---	---	---	---	---	---	----	-------

Overall
15th Percentile : 13 MPH
50th Percentile : 36 MPH
85th Percentile : 42 MPH
95th Percentile : 44 MPH
Mean Speed(Average) : 32 MPH
10 MPH Pace Speed : 36-45 MPH
Number in Pace : 23615
Percent in Pace : 55.6%
Number of Vehicles > 40 MPH : 10626
Percent of Vehicles > 40 MPH : 25.0%

Road Safety Audit - Park Street (Route 27) at Turnpike Street (including Campanelli Parkway and Surrounding Area), Town of Stoughton - Prepared by Old Colony Planning Council **FINAL**

Old Colony Planning Council
70 School Street
Brockton, MA 02301
(508) 583-1833
www.ocpcrpa.org

Page 1

Community: Stoughton
Com#_UR/FC: 285_U3
Recorder #: 32540
Layout: L6 Basic (2)

Station ID:
Site Code: 285
Date Start: 18-Sep-19
Date End: 19-Sep-19
Park St (27), north of Turnpike St

Start Time	16-Sep-19		Tue		Wed		Thu		Fri		Sat		Sun		Week Average	
	NB	SB	NB	SB	NB	SB	NB	SB	NB	SB	NB	SB	NB	SB	NB	SB
12:00 AM	*	*	*	*	57	61	62	61	*	*	*	*	*	*	60	61
01:00	*	*	*	*	25	40	47	44	*	*	*	*	*	*	36	42
02:00	*	*	*	*	41	29	25	27	*	*	*	*	*	*	33	28
03:00	*	*	*	*	44	24	32	41	*	*	*	*	*	*	38	32
04:00	*	*	*	*	119	62	128	74	*	*	*	*	*	*	124	68
05:00	*	*	*	*	382	207	380	195	*	*	*	*	*	*	371	201
06:00	*	*	*	*	769	386	920	385	*	*	*	*	*	*	854	386
07:00	*	*	*	*	886	603	893	620	*	*	*	*	*	*	890	612
08:00	*	*	*	*	832	682	865	655	*	*	*	*	*	*	848	668
09:00	*	*	*	*	555	522	696	603	*	*	*	*	*	*	626	562
10:00	*	*	*	*	525	572	498	570	*	*	*	*	*	*	512	571
11:00	*	*	*	*	501	530	571	553	*	*	*	*	*	*	536	542
12:00 PM	*	*	*	*	611	636	594	605	*	*	*	*	*	*	602	620
01:00	*	*	*	*	607	636	649	599	*	*	*	*	*	*	628	618
02:00	*	*	*	*	642	667	646	725	*	*	*	*	*	*	644	696
03:00	*	*	*	*	663	867	632	858	*	*	*	*	*	*	646	862
04:00	*	*	*	*	770	830	750	786	*	*	*	*	*	*	760	808
05:00	*	*	*	*	734	796	731	822	*	*	*	*	*	*	732	809
06:00	*	*	*	*	582	654	602	714	*	*	*	*	*	*	592	684
07:00	*	*	*	*	444	518	473	572	*	*	*	*	*	*	458	545
08:00	*	*	*	*	353	309	399	367	*	*	*	*	*	*	376	338
09:00	*	*	*	*	288	208	277	256	*	*	*	*	*	*	282	232
10:00	*	*	*	*	195	163	193	173	*	*	*	*	*	*	194	168
11:00	*	*	*	*	119	128	133	134	*	*	*	*	*	*	126	131
Lane Day	0	0	0	0	10764	10130	11176	10439	0	0	0	0	0	0	10970	10284
	0		0		20894		21615		0		0		0		21254	
AM Peak Vol.	-	-	-	-	07:00	08:00	06:00	08:00	-	-	-	-	-	-	07:00	08:00
	-	-	-	-	886	682	920	655	-	-	-	-	-	-	890	668
PM Peak Vol.	-	-	-	-	16:00	15:00	16:00	15:00	-	-	-	-	-	-	16:00	15:00
	-	-	-	-	770	867	750	858	-	-	-	-	-	-	760	862
Comb. Total	0		0		20894		21615		0		0		0		21254	

Road Safety Audit - Park Street (Route 27) at Turnpike Street (including Campanelli Parkway and Surrounding Area), Town of Stoughton - Prepared by Old Colony Planning Council **FINAL**

Old Colony Planning Council
70 School Street
Brockton, MA 02301
(508) 583-1833
www.ocpcrpa.org

Page 6

Community: Stoughton
Com#_UR/FC: 285_UD
Recorder #: 36133
Layout: L6 Basic (2')

Station ID:
Site Code: 285
Date Start: 18-Sep-19
Date End: 19-Sep-19
Campanelli Pkwy. east of Turnpike St

EB, WB		Cars & Trailer	2 Axle Long	Buses	2 Axle 6 Tire	3 Axle Single	4 Axle Single	<5 Axl Double	5 Axle Double	>6 Axl Double	<6 Axl Multi	6 Axle Multi	>6 Axl Multi	Total	Truck Total
Start Time	Motorc														
09/19/19	1	21	6	1	1	2	0	0	2	0	0	0	0	34	6
01:00	1	9	4	5	3	0	0	0	0	0	0	0	0	22	8
02:00	3	5	4	0	4	0	0	0	0	0	0	0	0	16	4
03:00	0	8	3	6	0	0	0	0	0	0	0	0	0	17	6
04:00	2	24	10	8	4	0	0	0	1	0	0	0	0	49	13
05:00	1	120	27	7	10	0	0	0	0	0	0	0	0	165	17
06:00	4	136	35	35	14	2	0	0	1	0	0	0	0	227	52
07:00	10	157	32	14	6	5	0	4	5	1	0	0	0	234	35
08:00	13	158	36	12	17	5	0	3	3	0	0	0	0	247	40
09:00	7	91	14	11	19	2	0	3	0	0	0	0	0	147	35
10:00	16	57	18	12	21	7	0	2	3	0	0	0	0	134	45
11:00	4	80	26	12	8	5	0	4	1	0	0	0	0	140	30
12 PM	8	226	38	18	19	4	0	5	0	0	0	0	0	318	46
13:00	4	168	36	14	14	1	0	3	1	0	0	0	0	241	33
14:00	5	125	41	12	15	0	0	2	1	0	0	0	0	201	30
15:00	6	137	34	16	10	6	0	4	2	0	0	0	0	215	38
16:00	5	153	33	9	13	1	0	2	2	0	0	0	0	218	27
17:00	1	201	31	6	12	2	0	0	0	0	0	0	0	253	20
18:00	0	64	16	7	6	0	0	0	0	0	0	0	0	83	13
19:00	5	29	6	1	8	1	0	0	0	0	0	0	0	50	10
20:00	6	14	3	3	6	0	0	0	0	0	0	0	0	32	9
21:00	2	10	4	2	4	1	0	0	0	0	0	0	0	23	7
22:00	0	15	3	1	1	0	0	0	1	0	0	0	0	21	3
23:00	0	7	1	1	3	0	0	0	1	0	0	0	0	13	5
Total	104	2015	459	213	218	44	0	32	24	1	0	0	0	3110	532
Percent	3.3%	64.8%	14.8%	6.8%	7.0%	1.4%	0.0%	1.0%	0.8%	0.0%	0.0%	0.0%	0.0%		17.1%
AM Peak	10:00	08:00	08:00	08:00	10:00	10:00		07:00	07:00	07:00				08:00	06:00
Vol.	16	158	36	36	21	7		4	5	1				247	52
PM Peak	12:00	12:00	14:00	12:00	12:00	15:00		12:00	15:00					12:00	12:00
Vol.	8	226	41	18	19	6		5	2					318	46
Grand Total	196	4135	803	422	402	84	0	63	50	1	0	0	0	6256	1022
Percent	3.1%	66.1%	14.4%	6.7%	6.4%	1.3%	0.0%	1.0%	0.8%	0.0%	0.0%	0.0%	0.0%		16.3%

Road Safety Audit - Park Street (Route 27) at Turnpike Street (including Campanelli Parkway and Surrounding Area), Town of Stoughton - Prepared by Old Colony Planning Council **FINAL**

Old Colony Planning Council
70 School Street
Brockton, MA 02301
(508) 583-1833
www.ocpcrpa.org

Page 6

Community: Stoughton
Com#_UR/FC: 285_U0
Recorder #: 36133
Layout: L6 Basic (2')

Station ID:
Site Code: 285
Date Start: 18-Sep-19
Date End: 19-Sep-19
Campanelli Pkwy, east of Turnpike St

EB, WB

Start Time	1 35	36 40	41 45	46 50	51 55	56 60	61 65	66 70	71 75	76 80	81 85	86 90	91 95	96 999	Total
09/19/19	31	2	1	0	0	0	0	0	0	0	0	0	0	0	34
01:00	22	0	0	0	0	0	0	0	0	0	0	0	0	0	22
02:00	15	1	0	0	0	0	0	0	0	0	0	0	0	0	16
03:00	17	0	0	0	0	0	0	0	0	0	0	0	0	0	17
04:00	48	1	0	0	0	0	0	0	0	0	0	0	0	0	49
05:00	164	1	0	0	0	0	0	0	0	0	0	0	0	0	165
06:00	225	2	0	0	0	0	0	0	0	0	0	0	0	0	227
07:00	232	2	0	0	0	0	0	0	0	0	0	0	0	0	234
08:00	244	2	1	0	0	0	0	0	0	0	0	0	0	0	247
09:00	142	5	0	0	0	0	0	0	0	0	0	0	0	0	147
10:00	133	1	0	0	0	0	0	0	0	0	0	0	0	0	134
11:00	136	4	0	0	0	0	0	0	0	0	0	0	0	0	140
12 PM	318	2	0	0	0	0	0	0	0	0	0	0	0	0	320
13:00	236	5	0	0	0	0	0	0	0	0	0	0	0	0	241
14:00	194	6	1	0	0	0	0	0	0	0	0	0	0	0	201
15:00	210	4	1	0	0	0	0	0	0	0	0	0	0	0	215
16:00	212	4	2	0	0	0	0	0	0	0	0	0	0	0	218
17:00	262	2	0	0	0	0	0	0	0	0	0	0	0	0	254
18:00	89	3	1	0	0	0	0	0	0	0	0	0	0	0	93
19:00	48	2	0	0	0	0	0	0	0	0	0	0	0	0	50
20:00	31	0	1	0	0	0	0	0	0	0	0	0	0	0	32
21:00	22	1	0	0	0	0	0	0	0	0	0	0	0	0	23
22:00	20	1	0	0	0	0	0	0	0	0	0	0	0	0	21
23:00	13	0	0	0	0	0	0	0	0	0	0	0	0	0	13
Total	3054	51	8	0	0	0	0	0	0	0	0	0	0	0	3113

Daily

15th Percentile :	5 MPH
50th Percentile :	17 MPH
85th Percentile :	30 MPH
95th Percentile :	33 MPH
Mean Speed(Average) :	18 MPH
10 MPH Pace Speed :	1-10 MPH
Number in Pace :	873
Percent in Pace :	28.0%
Number of Vehicles > 30 MPH :	495
Percent of Vehicles > 30 MPH :	15.9%

Grand Total	6132	109	17	1	0	0	0	0	0	0	0	0	0	0	6259
-------------	------	-----	----	---	---	---	---	---	---	---	---	---	---	---	------

Overall

15th Percentile :	5 MPH
50th Percentile :	17 MPH
85th Percentile :	30 MPH
95th Percentile :	33 MPH
Mean Speed(Average) :	18 MPH
10 MPH Pace Speed :	1-10 MPH
Number in Pace :	1752
Percent in Pace :	28.0%
Number of Vehicles > 30 MPH :	1003
Percent of Vehicles > 30 MPH :	16.0%

Road Safety Audit - Park Street (Route 27) at Turnpike Street (including Campanelli Parkway and Surrounding Area), Town of Stoughton - Prepared by Old Colony Planning Council **FINAL**

Community: Stoughton
Com#_UR/FC: 285_0
Recorder #: 36133
Layout: L6 Basic (2')

Old Colony Planning Council
70 School Street
Brockton, MA 02301
(508) 583-1833
www.ocpcrpa.org

Page 1
Station ID:
Site Code: 285
Date Start: 18-Sep-19
Date End: 19-Sep-19
Campanelli Pkwy, east of Turnpike St

Start Time	16-Sep-19		Tue		Wed		Thu		Fri		Sat		Sun		Week Average	
	EB	WB	EB	WB	EB	WB	EB	WB	EB	WB	EB	WB	EB	WB	EB	WB
12:00 AM	*	*	*	*	6	7	12	22	*	*	*	*	*	*	9	14
01:00	*	*	*	*	5	21	7	15	*	*	*	*	*	*	6	18
02:00	*	*	*	*	7	4	9	7	*	*	*	*	*	*	8	6
03:00	*	*	*	*	9	11	9	8	*	*	*	*	*	*	9	10
04:00	*	*	*	*	28	14	32	17	*	*	*	*	*	*	30	16
05:00	*	*	*	*	147	27	141	24	*	*	*	*	*	*	144	26
06:00	*	*	*	*	183	72	160	67	*	*	*	*	*	*	172	70
07:00	*	*	*	*	189	61	193	41	*	*	*	*	*	*	191	51
08:00	*	*	*	*	220	38	197	50	*	*	*	*	*	*	208	44
09:00	*	*	*	*	87	50	86	61	*	*	*	*	*	*	86	56
10:00	*	*	*	*	68	61	77	57	*	*	*	*	*	*	72	59
11:00	*	*	*	*	64	96	54	86	*	*	*	*	*	*	59	91
12:00 PM	*	*	*	*	126	143	144	176	*	*	*	*	*	*	135	160
01:00	*	*	*	*	140	108	137	104	*	*	*	*	*	*	138	106
02:00	*	*	*	*	93	141	85	116	*	*	*	*	*	*	89	128
03:00	*	*	*	*	57	131	73	142	*	*	*	*	*	*	65	136
04:00	*	*	*	*	45	199	39	179	*	*	*	*	*	*	42	189
05:00	*	*	*	*	21	227	18	236	*	*	*	*	*	*	20	232
06:00	*	*	*	*	27	77	34	59	*	*	*	*	*	*	30	68
07:00	*	*	*	*	24	30	15	35	*	*	*	*	*	*	20	32
08:00	*	*	*	*	15	18	15	17	*	*	*	*	*	*	15	18
09:00	*	*	*	*	6	9	9	14	*	*	*	*	*	*	8	12
10:00	*	*	*	*	5	5	11	10	*	*	*	*	*	*	8	8
11:00	*	*	*	*	8	16	2	11	*	*	*	*	*	*	5	14
Lane Day	0	0	0	0	1580	1566	1559	1554	0	0	0	0	0	0	1569	1564
	0		0		3146		3113		0		0		0		3133	
AM Peak Vol.	-	-	-	-	08:00	11:00	08:00	11:00	-	-	-	-	-	-	08:00	11:00
	-	-	-	-	220	96	197	86	-	-	-	-	-	-	208	91
PM Peak Vol.	-	-	-	-	13:00	17:00	12:00	17:00	-	-	-	-	-	-	13:00	17:00
	-	-	-	-	140	227	144	236	-	-	-	-	-	-	138	232
Comb. Total	0		0		3146		3113		0		0		0		3133	

Road Safety Audit - Park Street (Route 27) at Turnpike Street (including Campanelli Parkway and Surrounding Area), Town of Stoughton - Prepared by Old Colony Planning Council **FINAL**

Intersection: 1 - Park Street at Turnpike

1 - Park Street at Turnpike

Intersection Summary

Warrant Status		
<input checked="" type="checkbox"/> Warrant 1 - Eight-hour Vehicular Volume	Met	Notes
- Warrant 1 (A or B) met		
- Warrant 1 (A and B) met		
<input checked="" type="checkbox"/> Warrant 2 - Four-hour Vehicular Volume	Met	
- Warrant met		
<input checked="" type="checkbox"/> Warrant 3 - Peak Hour Delay/Volumes	Met	
- Warrant 3A not met		
- Warrant 3B met		
<input checked="" type="checkbox"/> Warrant 4 - Pedestrian Volume	Not Met	
- Warrant not met		
<input checked="" type="checkbox"/> Warrant 5 - School Crossing	Not Met	
- Warrant not met		
<input checked="" type="checkbox"/> Warrant 6 - Coordinated Signal System	Not Met	
- Warrant not met		
<input checked="" type="checkbox"/> Warrant 7 - Crash Experience	Not Met	
- Warrant not met		
<input checked="" type="checkbox"/> Warrant 8 - Roadway Network	Met	
- Warrant met		
<input checked="" type="checkbox"/> Warrant 9 - Grade Crossing	Not Met	
- Warrant not met		
<input checked="" type="checkbox"/> AWSC Warrant - Multiway Stop Applications	Met	
- Warrant met		

Status | Site Information | Vehicle Volumes | Pedestrian Volumes | Gaps | Delays | Bicycle Volumes

Summary | Warrant 1 | Warrant 2 | Warrant 3 | Warrant 4 | Warrant 5 | Warrant 6 | Warrant 7 | Warrant 8 | Warrant 9 | All

Ready





Road Safety Audit - Park Street (Route 27) at Turnpike Street (including Campanelli Parkway and Surrounding Area), Town of Stoughton - Prepared by Old Colony Planning Council **FINAL**

HCM 6th TWSC

Park Street at Turnpike St

pm peak





10/15/2019

Intersection						
Int Delay, s/veh	68.6					
Movement	WBL	WBR	NBT	NBR	SBL	SBT
Lane Configurations						
Traffic Vol, veh/h	192	12	629	111	3	919
Future Vol, veh/h	192	12	629	111	3	919
Conflicting Peds, #/hr	0	0	0	0	0	0
Sign Control	Stop	Stop	Free	Free	Free	Free
RT Channelized	-	None	-	None	-	None
Storage Length	0	50	-	-	-	-
Veh in Median Storage, #	0	-	0	-	-	0
Grade, %	0	-	0	-	-	0
Peak Hour Factor	92	92	92	92	92	92
Heavy Vehicles, %	2	2	2	2	2	2
Mvmt Flow	209	13	684	121	3	999
Major/Minor	Minor1	Major1	Major2			
Conflicting Flow All	1750	745	0	0	805	0
Stage 1	745	-	-	-	-	-
Stage 2	1005	-	-	-	-	-
Critical Hdwy	6.42	6.22	-	-	4.12	-
Critical Hdwy Stg 1	5.42	-	-	-	-	-
Critical Hdwy Stg 2	5.42	-	-	-	-	-
Follow-up Hdwy	3.518	3.318	-	-	2.218	-
Pot Cap-1 Maneuver	~ 94	414	-	-	819	-
Stage 1	469	-	-	-	-	-
Stage 2	354	-	-	-	-	-
Platoon blocked, %			-	-	-	-
Mov Cap-1 Maneuver	~ 93	414	-	-	819	-
Mov Cap-2 Maneuver	~ 93	-	-	-	-	-
Stage 1	469	-	-	-	-	-
Stage 2	351	-	-	-	-	-
Approach	WB	NB	SB			
HCM Control Delay, s	627.9	0	0			
HCM LOS	F					
Minor Lane/Major Mvmt	NBT	NBR	WBLn1	WBLn2	SBL	SBT
Capacity (veh/h)	-	-	93	414	819	-
HCM Lane V/C Ratio	-	-	2.244	0.032	0.004	-
HCM Control Delay (s)	-	-	666.3	14	9.4	0
HCM Lane LOS	-	-	F	B	A	A
HCM 95th %tile Q(veh)	-	-	18.7	0.1	0	-
Notes						
-: Volume exceeds capacity \$: Delay exceeds 300s +: Computation Not Defined *: All major volume in platoon						

Road Safety Audit - Park Street (Route 27) at Turnpike Street (including Campanelli Parkway and Surrounding Area), Town of Stoughton - Prepared by Old Colony Planning Council **FINAL**

HCM 6th TWSC
Park Street at Turnpike St

am peak
10/15/2019

Intersection						
Int Delay, s/veh	2.7					
Movement	WBL	WBR	NBT	NBR	SBL	SBT
Lane Configurations						
Traffic Vol, veh/h	64	5	732	353	3	521
Future Vol, veh/h	64	5	732	353	3	521
Conflicting Peds, #/hr	4	4	0	4	4	0
Sign Control	Stop	Stop	Free	Free	Free	Free
RT Channelized	-	None	-	None	-	None
Storage Length	0	50	-	-	-	-
Veh in Median Storage, #	0	-	0	-	-	0
Grade, %	0	-	0	-	-	0
Peak Hour Factor	92	92	92	92	92	92
Heavy Vehicles, %	2	2	2	2	2	2
Mvmt Flow	70	5	796	384	3	566
Major/Minor	Minor1	Major1	Major2			
Conflicting Flow All	1568	996	0	0	1184	0
Stage 1	992	-	-	-	-	-
Stage 2	576	-	-	-	-	-
Critical Hdwy	6.42	6.22	-	-	4.12	-
Critical Hdwy Stg 1	5.42	-	-	-	-	-
Critical Hdwy Stg 2	5.42	-	-	-	-	-
Follow-up Hdwy	3.518	3.318	-	-	2.218	-
Pot Cap-1 Maneuver	122	297	-	-	590	-
Stage 1	359	-	-	-	-	-
Stage 2	562	-	-	-	-	-
Platoon blocked, %			-	-	-	-
Mov Cap-1 Maneuver	120	295	-	-	588	-
Mov Cap-2 Maneuver	120	-	-	-	-	-
Stage 1	358	-	-	-	-	-
Stage 2	556	-	-	-	-	-
Approach	WB	NB		SB		
HCM Control Delay, s	66.1	0		0.1		
HCM LOS	F					
Minor Lane/Major Mvmt	NBT	NBRWBLn1	WBLn2	SBL	SBT	
Capacity (veh/h)	-	-	120	295	588	-
HCM Lane V/C Ratio	-	-	0.58	0.018	0.006	-
HCM Control Delay (s)	-	-	69.9	17.4	11.2	0
HCM Lane LOS	-	-	F	C	B	A
HCM 95th %tile Q(veh)	-	-	2.9	0.1	0	-

Appendix E. Road Safety Audit References

Road Safety Audit References

FHWA Office of Safety - Proven Safety Countermeasures, U.S. Department of Transportation, Federal Highway Administration <https://safety.fhwa.dot.gov/provencountermeasures/>.

Road Safety Audits, A Synthesis of Highway Practice. NCHRP Synthesis 336. Transportation Research Board, National Cooperative Highway Research Program, 2004.

Road Safety Audits. U.S. Department of Transportation, Federal Highway Administration, <https://safety.fhwa.dot.gov/rsa/>

FHWA Road Safety Audit Guidelines. U.S. Department of Transportation, Federal Highway Administration, 2006.

Road Safety Audit, 2nd edition. Austroads, 2000.

Road Safety Audits. ITE Technical Council Committee 4S-7. Institute of Transportation Engineers, February 1995.