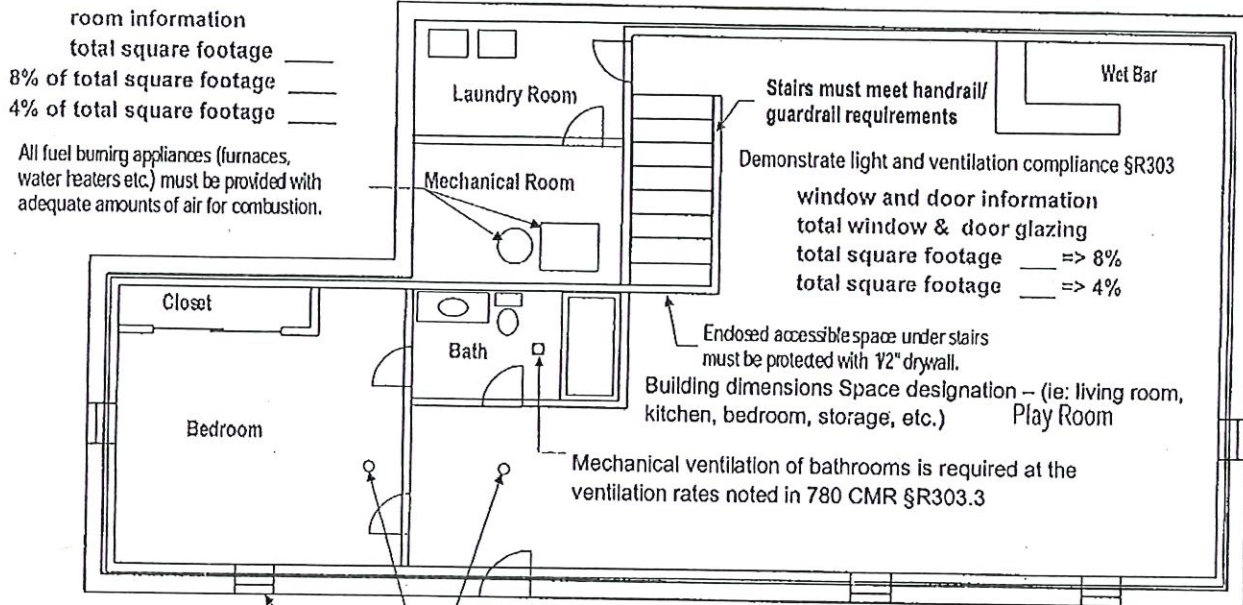


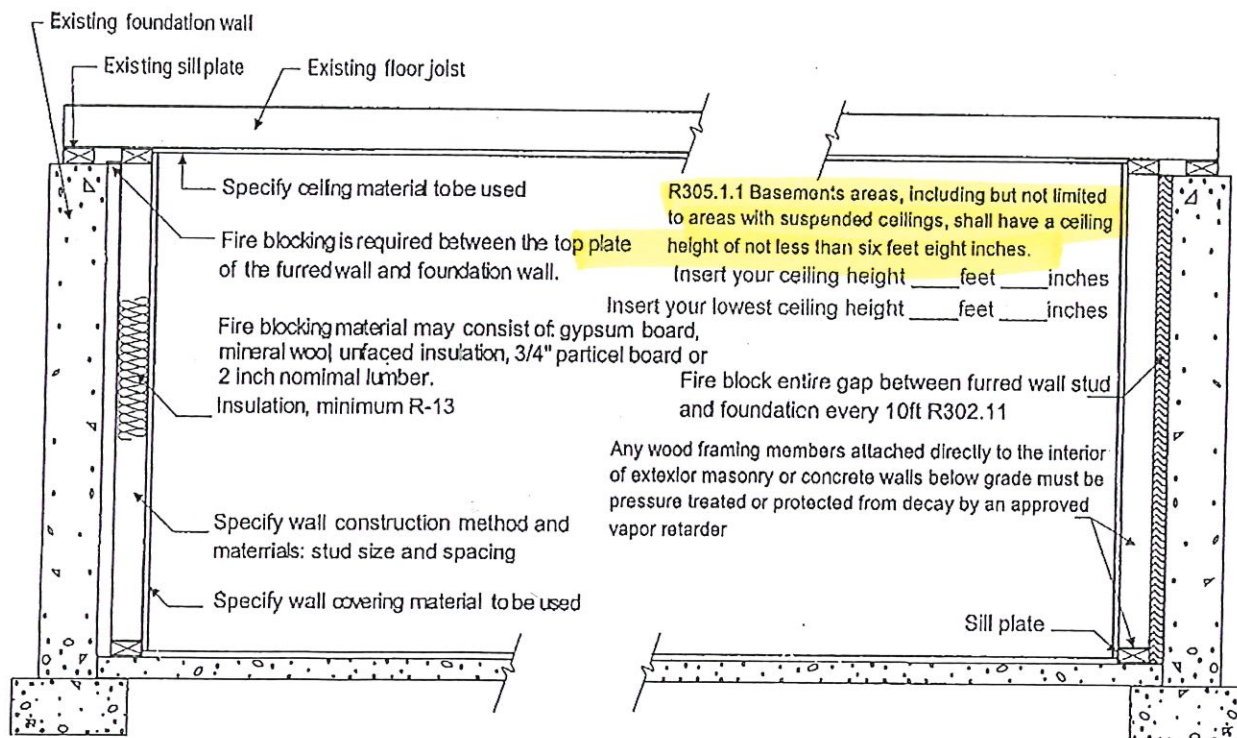
## Typical Basement Conversion to Habitable Space



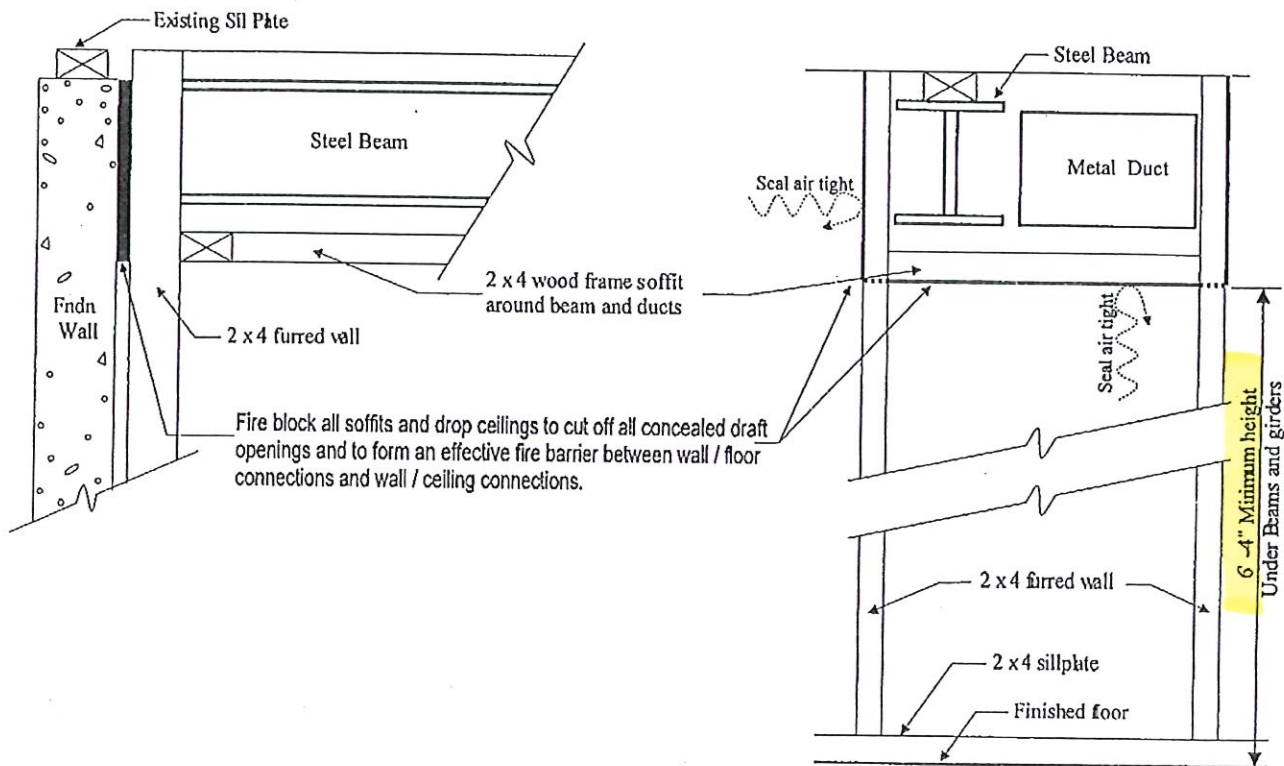
All sleeping rooms must have an emergency escape window. §R310  
See detail on next page

§ AJ102.3 Smoke Heat Detection and Carbon Monoxide Alarm Systems and CO Detection and Alarm. When one or more sleeping rooms are added or created in existing dwellings, the entire existing building shall be provided with smoke detectors, heat detector and carbon monoxide detectors designed, located and installed in accordance with the provisions for new construction, 780 CMR

### FLOOR PLAN FOR BASEMENT FINISH

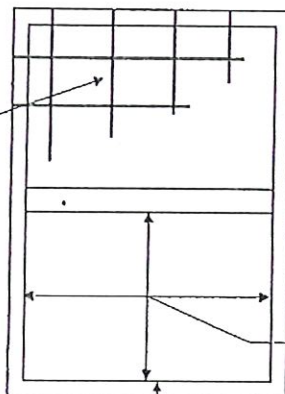


### TYPICAL WALL SECTION



### SOFFIT FIRESTOPPING DETAIL

Bars, grilles, covers, screens or similar devices are permitted to be placed over emergency escape opening or window wells provided they meet the minimum net clear opening requirements and such devices are releasable or removable from the inside without the use of a key, tool, special knowledge or force greater than that which is required for normal operation of the escape and rescue opening.



44" Max. sill height for egress (bedroom) \_\_\_\_" (insert your sill height)

### EMERGENCY ESCAPE WINDOW DETAIL

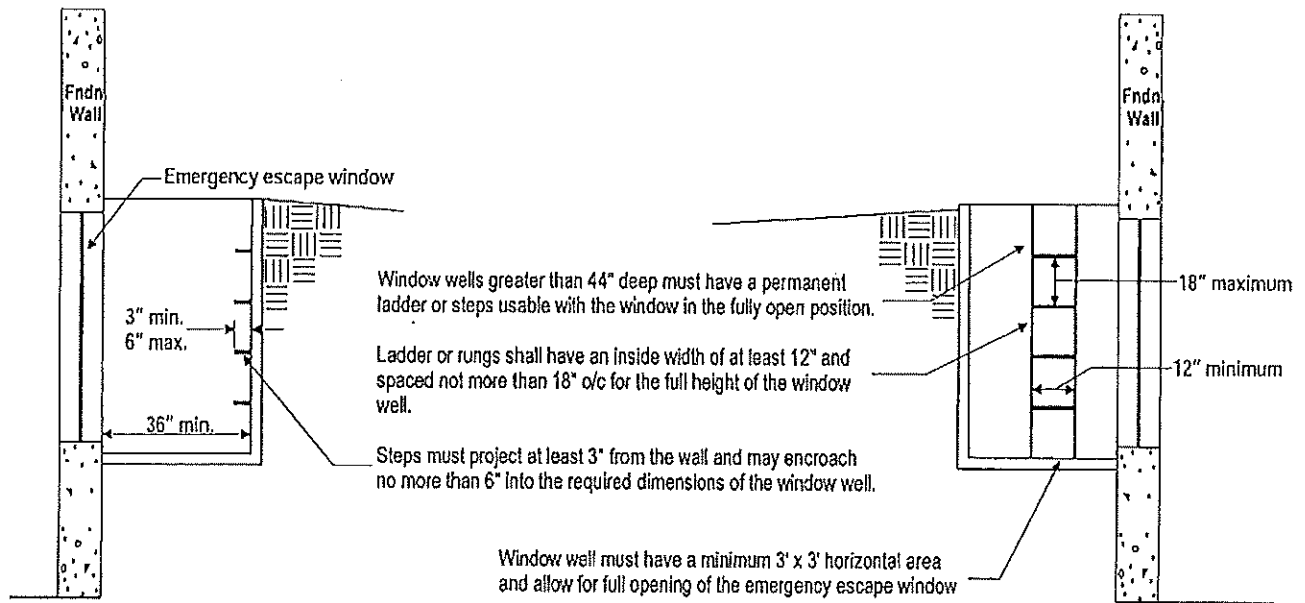
Windows measured from floor to top of sill

Emergency escape and rescue openings shall be operational from the inside of the room without the use of keys, tools or special knowledge.

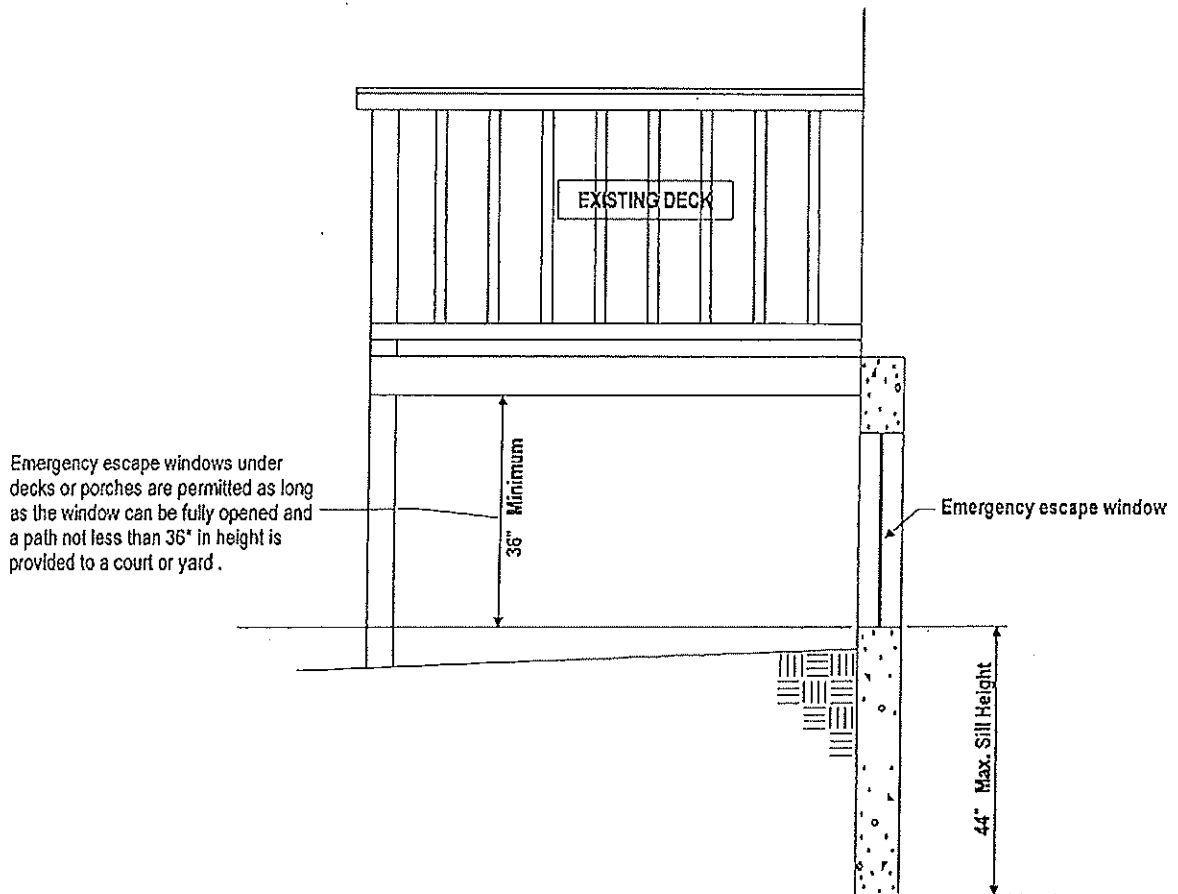
#### § R310 Minimum Opening Area.

All emergency escape and rescue openings shall have a minimum net clear opening of 5.7 square feet.

- Exceptions: 1. Grade floor openings shall have a minimum net clear opening of five square feet (0.465 m<sup>2</sup>).  
2. Double hung windows used for emergency escape shall be permitted to have a net clear opening of 3.3 square feet (0.31 m<sup>2</sup>) provided that at least one operable sash meets the minimum height and width required by 780 CMR § R310.1.2 and § R310.1.3 and operational constraints defined by 780 CMR § R310.1.4.



### EMERGENCY ESCAPE WINDOW WELL DETAIL



### EMERGENCY ESCAPE WINDOW UNDER EXISTING STRUCTURES