

Downtown Traffic Improvements



Board of Selectmen Presentation
March 26, 2019



Project Overview

2

- Project extends from Monk Street, through the Square to the Sumner Street intersection.
- Geometric & pedestrian safety improvements to Monk St/Washington Street Intersection
- North & South Square signals being upgraded with Video Detection
- Southern Square Island re-constructed to provide dedicated left turn lane, permanent Landscape beds, and cobblestone areas.
- Northern Square Island re-constructed to provide permanent Landscape beds, additional landscaping and cobblestone areas.
- Compliant accessible ramps being constructed in all locations.



Project Overview (cont.)

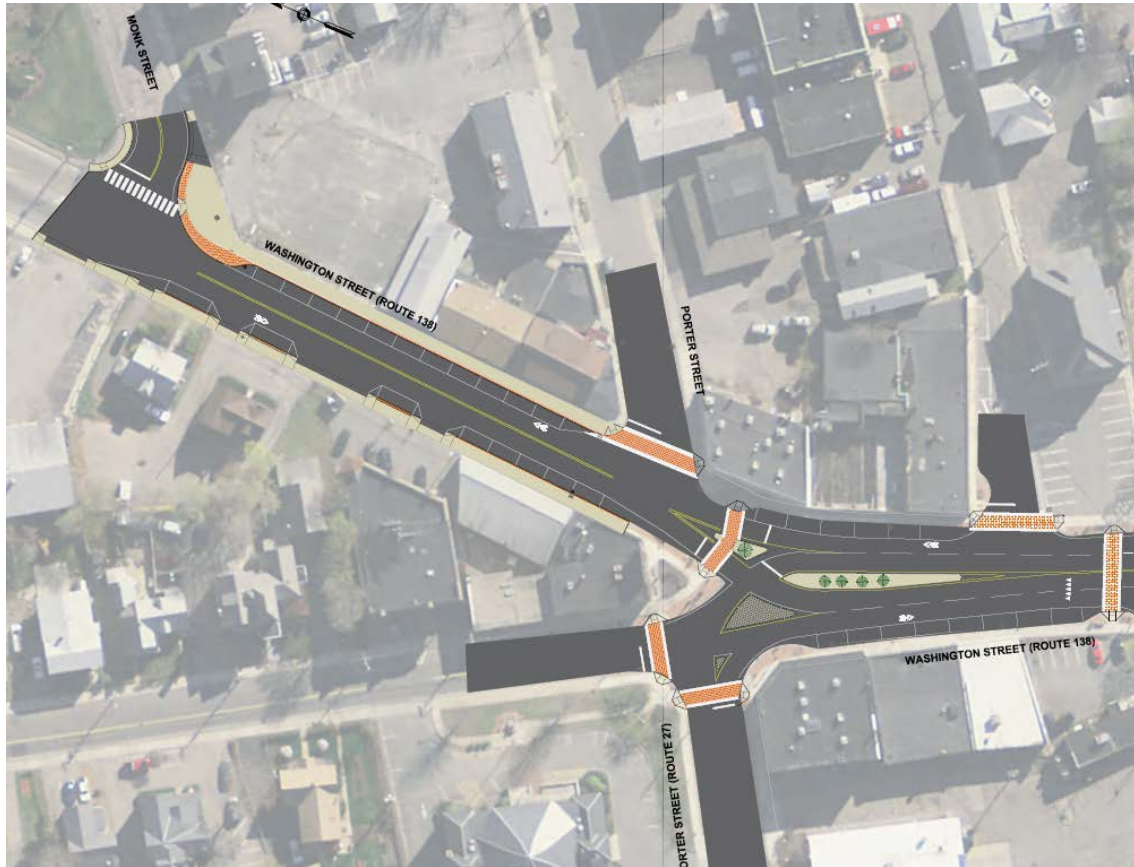
3

- Public Parking Lot in Square being enhanced with curbing and landscaping.
- Walnut Street/ Park Street Intersection Signalized (Video Detection)
- Curbing and sidewalks being re-constructed in various sections of the Corridor
- New cross-walks being constructed in all locations
- Entire Corridor (Monk to Sumner) – being repaved, striped and signed
- Bicycle Accommodations - Sharrows, Bike Lanes
- Sumner Street Intersection Improvements
 - Geometric layout improvements – standard T-Intersection
 - Pedestrian Safety Improvements (cross walks, islands, etc.)



Project Overview (cont.)

4



Project Overview (cont.)

5



Project Overview (cont.)

6



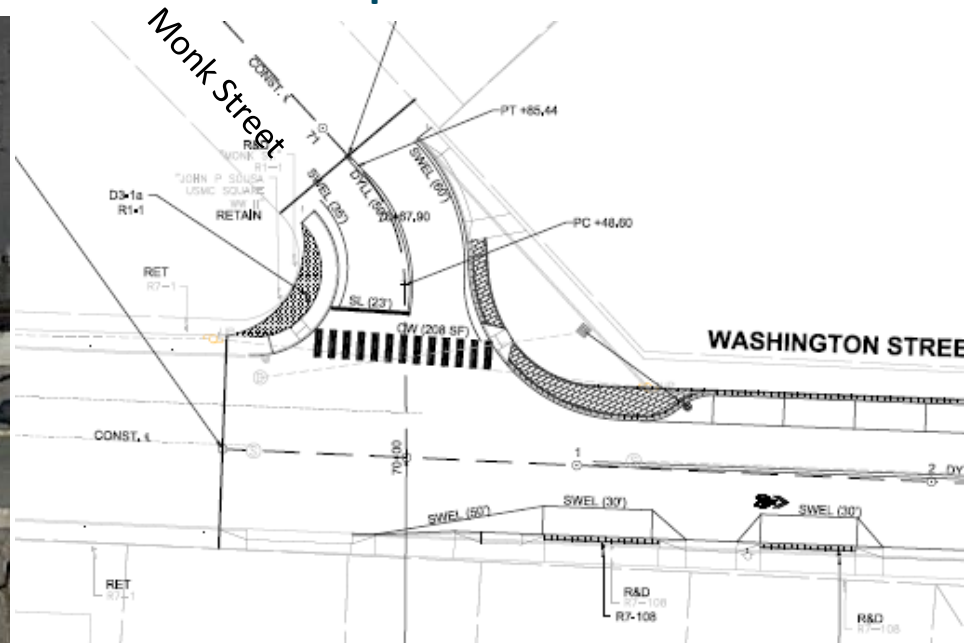
Monk Street/ Washington Street Intersection

7

Existing Conditions



Proposed Conditions



9

[illegible]

Square Improvements – North/South Islands

10

Example - Randolph, MA



Square Improvements – North Island Tree Plantings ¹¹

Existing – Improperly Planted

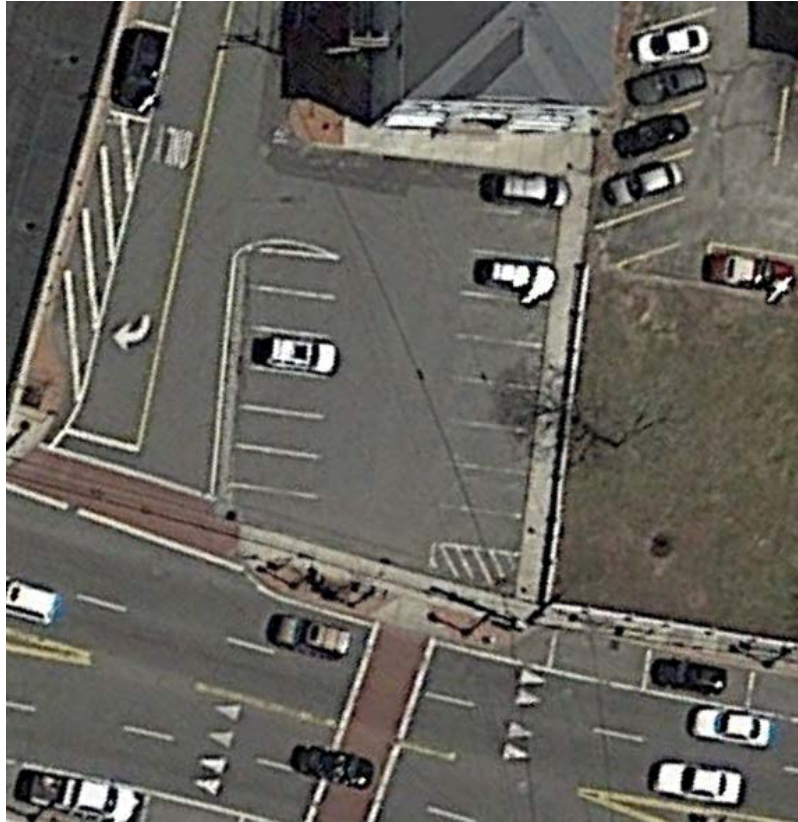


Properly Planted - Healthy, Flourishing

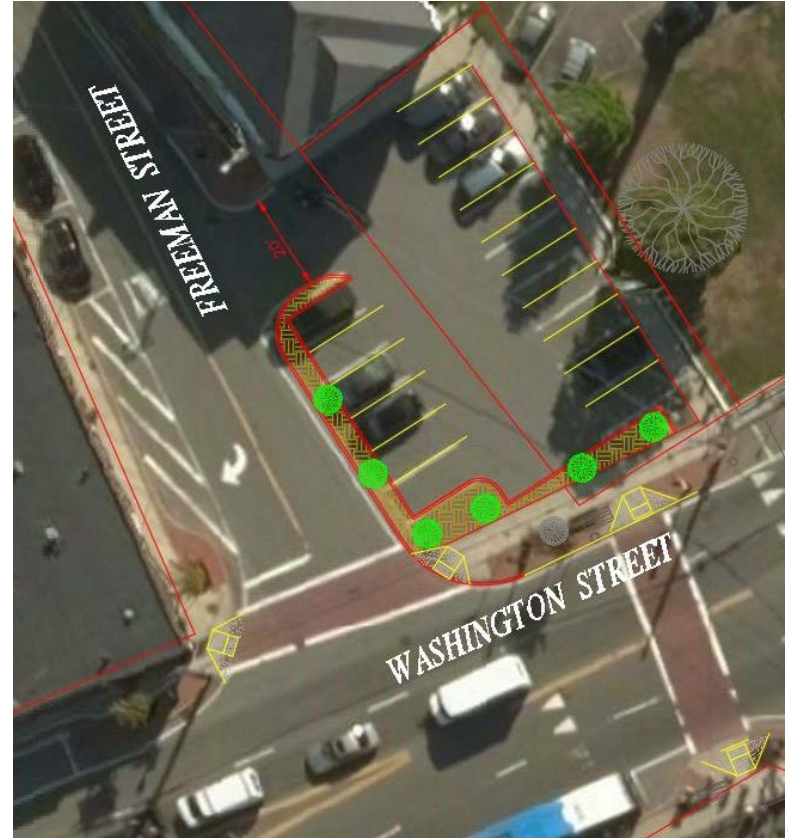


Square Improvements – Freeman St. Public Parking Lot 12

Existing Conditions



Proposed Conditions



Downtown Improvements - Crosswalks

13

**Standard Crosswalk – Continental Style
(Outside Downtown Area)**



**Typical Crosswalk Treatment
(Downtown Areas)**



Downtown Improvements - Crosswalks

14

Typical Crosswalk Treatment (Downtown Areas)



Downtown Improvements - Sidewalks

15

Typical Sidewalk Treatment (Downtown Areas)

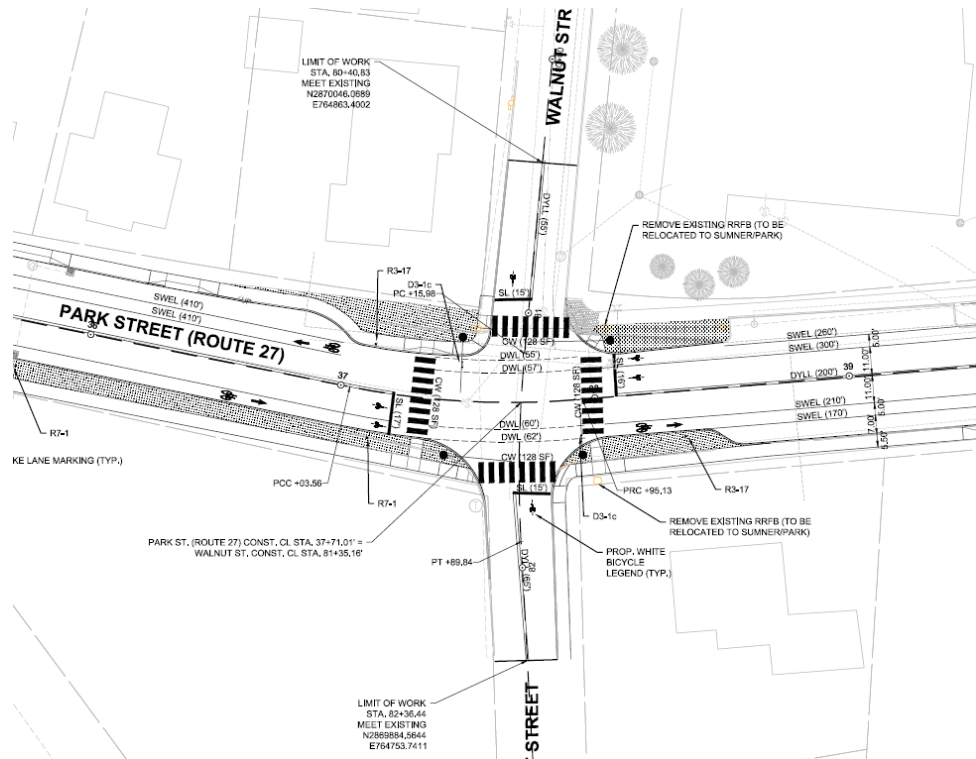


Walnut/ Park Street Intersection – Signalization

Existing Conditions



Proposed Conditions



Sumner Street/ Park Street Intersection

17

Existing Conditions



18



Sumner Street/ Park Street Intersection

19

Proposed Conditions



Questions?

