

## Steps to Properly Dispose of Yard Waste in Stoughton

Leaves and grass clippings are *only* accepted at the Stoughton Recycling Center, 100 Page Street, and not at curbside. It is not necessary to put leaves in paper bags.

The Recycling Center is open to Stoughton residents who pay for sanitation services and get their trash collected by the Department of Public Works.

Recycling Center is open YEAR ROUND on Saturdays from 8am—4:30pm.

Christmas trees are picked up by the town on your recycling pick up day during the month of January.

No lights or stands are allowed.

Compost barrels are available for purchase for \$75+tax. For further details, please contact Environmental Affairs Officer, James Conlon at 781-341-1300 x 9262

For more information about yard waste disposal, please call the Stoughton DPW 781-344-2112 or 781-341-1300 Ext. 9312.

Additional information can be found on-line at [www.stoughton.org](http://www.stoughton.org)

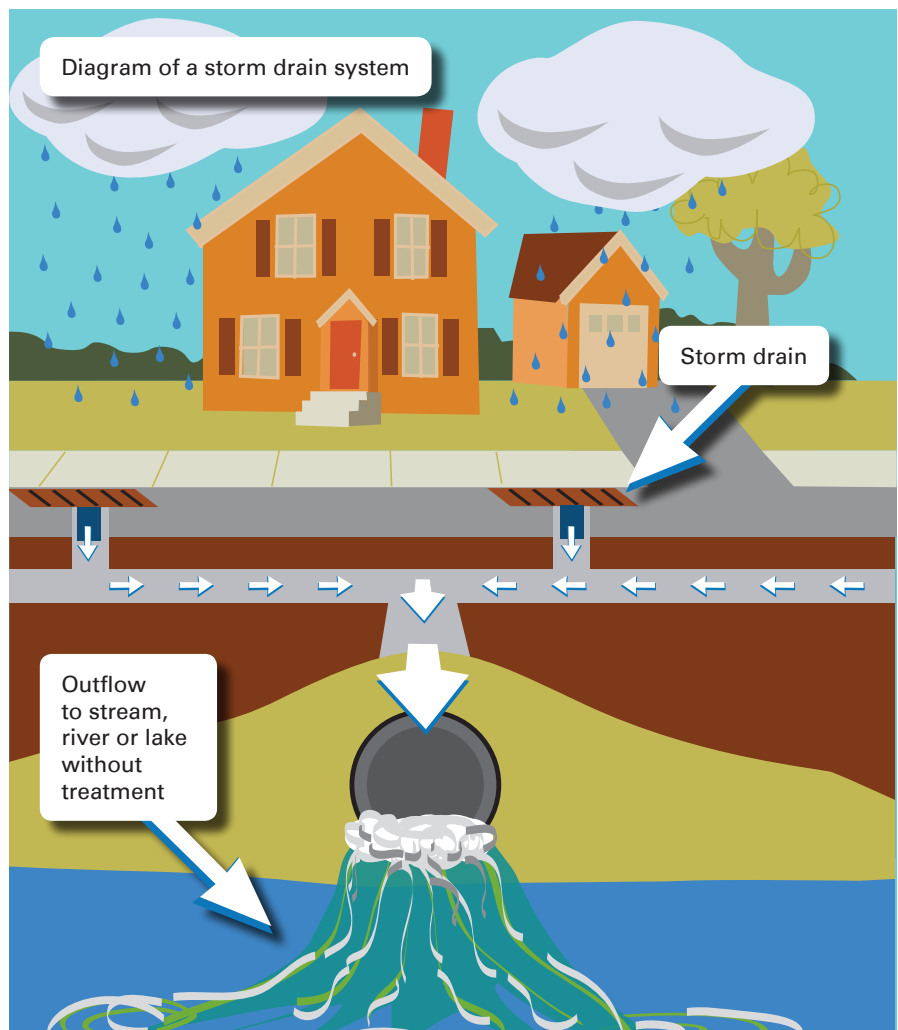
## Working Together to Prevent Stormwater Pollution

Many towns in Massachusetts are covered with acres of pavement and concrete.

When rain hits these hard surfaces, it washes pollutants like pet waste, bacteria, oil, litter, fertilizer, and grass clippings into storm drains, which then lead directly to local waterways.

Water that flows into storm drains is **NOT** treated—and pollutants on the street flow directly into streams and ponds, affecting the health of drinking water, wildlife and recreation.

Your town is working towards cleaner waterways by participating in the Neponset Stormwater Partnership (NSP), which offers resources to help eliminate water pollution that comes from paved surfaces. In addition, the U.S. Environmental Protection Agency has recently released new stricter water pollution regulations that we are committed to meeting.



Call the NSP Stormwater Hotline 781-575-0354 x300 or the Stoughton DPW 781-344-2112 with stormwater questions or to report dumping.

For more information on stormwater prevention, visit [www.YourCleanWater.org](http://www.YourCleanWater.org).

## Help Keep Stoughton's Water Clean This Fall

Fall leaves and yard waste can cause pollution and flooding when dumped or stored near wetlands, waterways or stormdrains.

*Did you know, fallen leaves are loaded with natural fertilizer, which can cause harmful water pollution for people and animals?*

Dumped leaves can also block stormdrains and waterways, causing flooding.



**Keep Stoughton's waterways clean and healthy this fall with a few simple steps.**

- **Never** dump leaves in wetlands or waterways
- Bag leaves in paper bags for disposal by the town (details on back)
- Or compost your yard waste at home in an area away from wetlands and stormdrains
- Keep paved areas and stormdrains clear of leaves
- Make sure your lawn service is properly disposing of all your waste



More tips at [www.YourCleanWater.org/leaves](http://www.YourCleanWater.org/leaves)



*The Neponset Stormwater Partnership (NSP) is a program managed by the Neponset River Watershed Association on behalf of ten member communities. NSP aims to increase the effectiveness of municipal stormwater management programs through regional cooperation and resource sharing.*