

Water Resource Management under the
Massachusetts Inland Wetlands Protection Act,
Massachusetts General Laws Chapter. 131
Section 30

James Conlon, MS, RS, PWS
Environmental Affairs Officer of the
Town of Stoughton

Wetlands Protection Program

The Wetlands Protection Act protects wetlands and the public interests they serve, including:

1. Flood Control;
2. Prevention of pollution;
3. Storm damage;
4. Protection of public and private water supplies;
5. Protection of groundwater supply;
6. Protection of fisheries;
7. Protection of land containing shellfish;
8. And, protection of wildlife habitat.



Types of Protected Wetland Resource Areas: 1, Vernal Pool; 2. Dunes , (Velocity Zone); 3. Intermittent Stream, 4, Perennial Stream; 5. Maple swamp; 5. Riparian Shrub Swamp; 6. Mill Pond; 7, Drainage Channel; 8 .Tidal Flats 9 Atlantic Ocean

1. Wetlands are protected by Law-

DEP and the Stoughton Conservation

Commission are the Approving Authorities under the MA

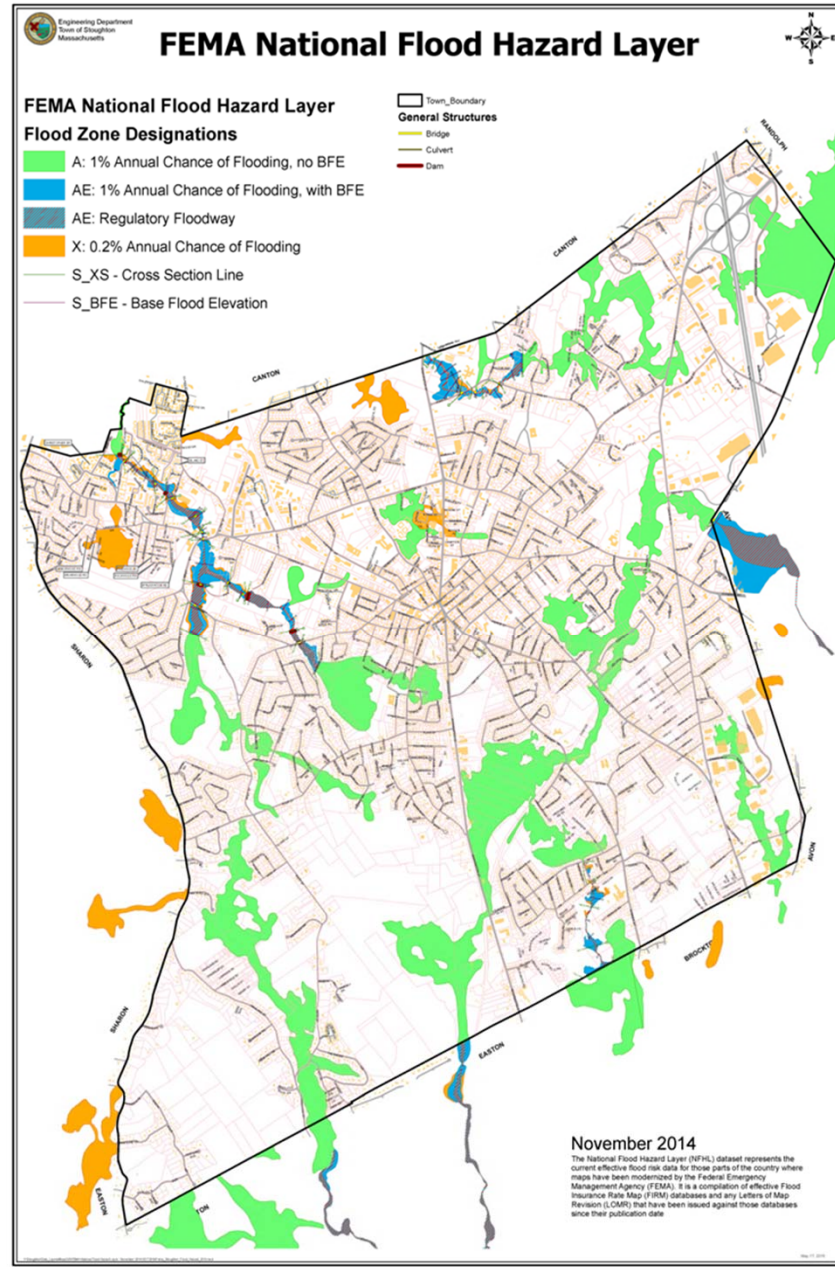
Wetlands Protection Act for construction projects less than or within 100 feet from Wetlands. This is authorized under the USEPA Clean Water Act.



Flood control -

means the prevention or reduction of flooding and flood damage.

This map includes regulated Flood Hazard Districts in the town.



2. Prevention of pollution-

This means the prevention or reduction of contamination of surface or ground water.



ECB or Erosion Control Barriers

2. Prevention of pollution- including management of stormwater from TSS Pollution.



Jute Mat, BMP to prevent erosion until vegetated stabilization

2. Prevention of pollution; failure.



Prevention of pollution; failure.



Inlet to Street Drainage system.

2. Prevention of pollution; Silts reaching a drainage channel discharged into a culvert in a unprotected street stormwater system.



3. Storm damage prevention.

Storm damage prevention means the prevention of damage caused by water from storms including but not limited to sedimentation, damage to vegetation, property or buildings, or damage caused by flooding, water born debris or water borne ice.



4. Protection of public and private water supplies; Gravel packed Wells are the source of our Public Water Supply in Stoughton. Artesian wells are most of the private water supplies serving residents beyond the range of our Water Distribution System.

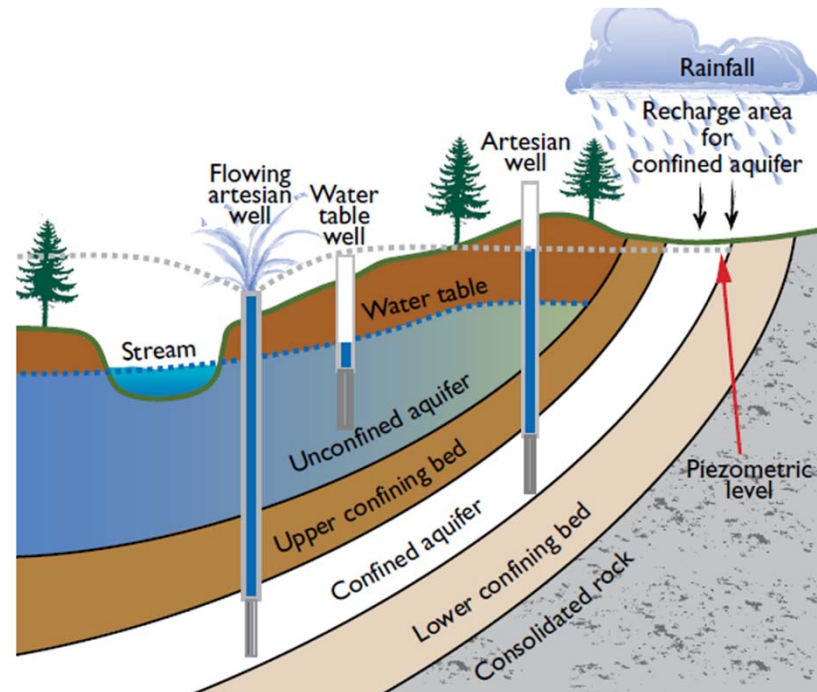
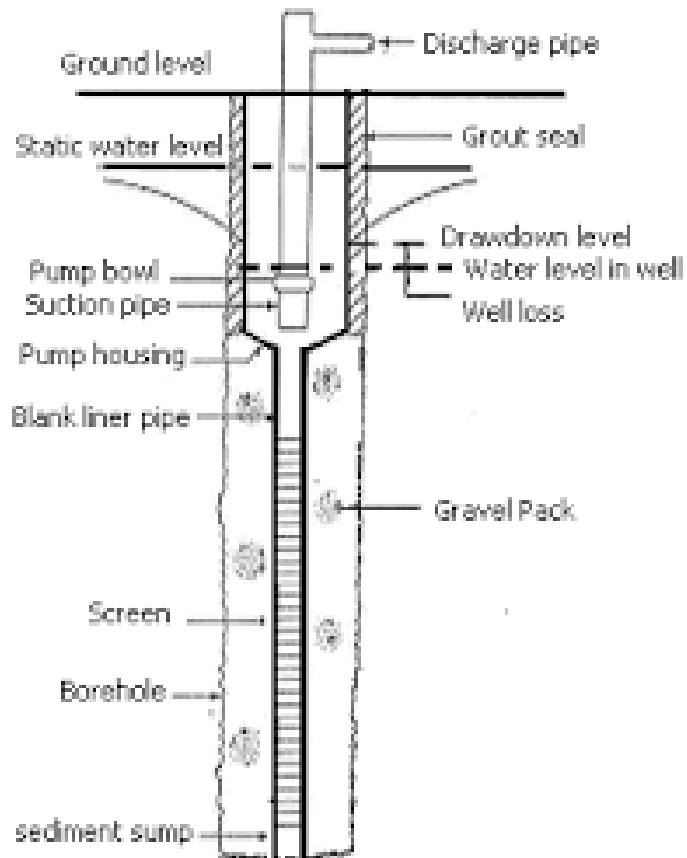
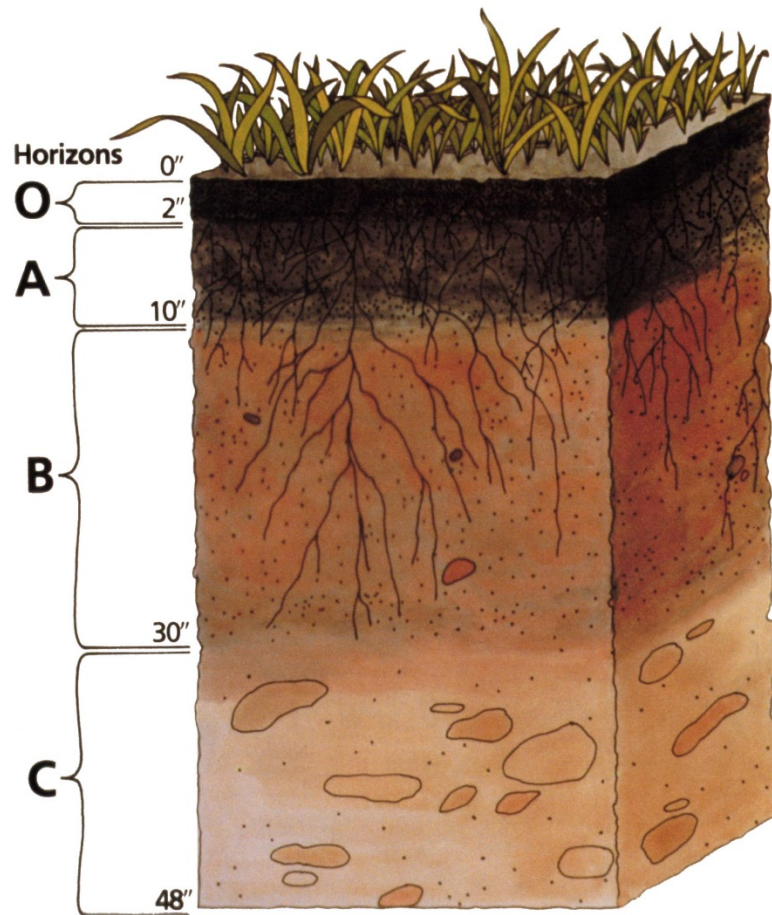


Figure 1. Geological and topographical controls affecting artesian and flowing artesian wells.

5. Protection of groundwater supply;
ground water clearances are maintained in
construction projects to achieve this objective.

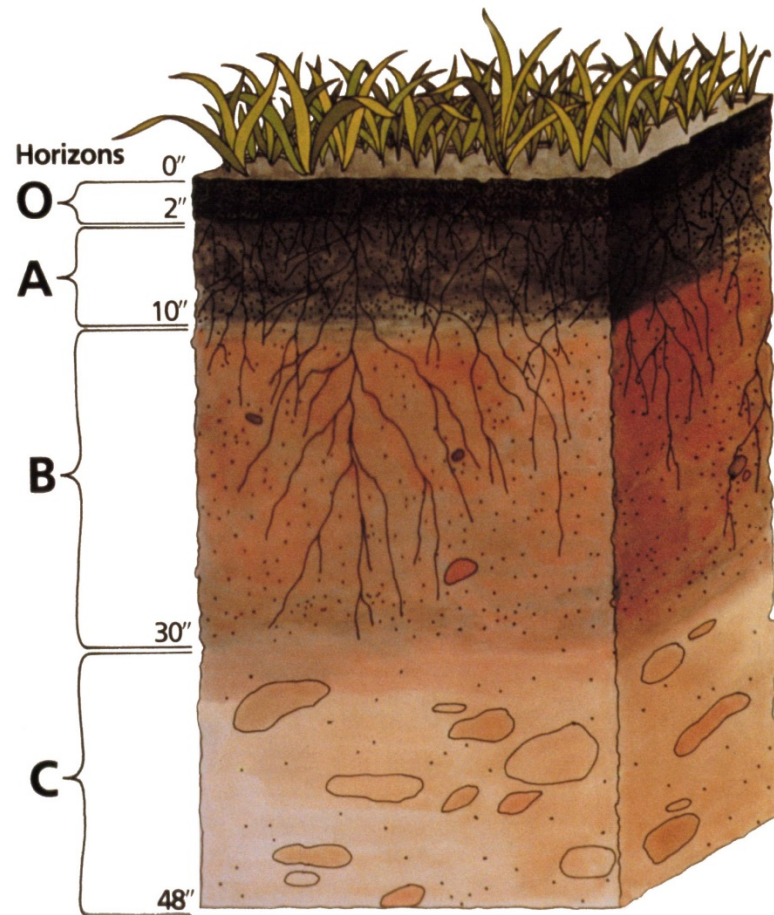


5. Protection of groundwater supply; Soil profile

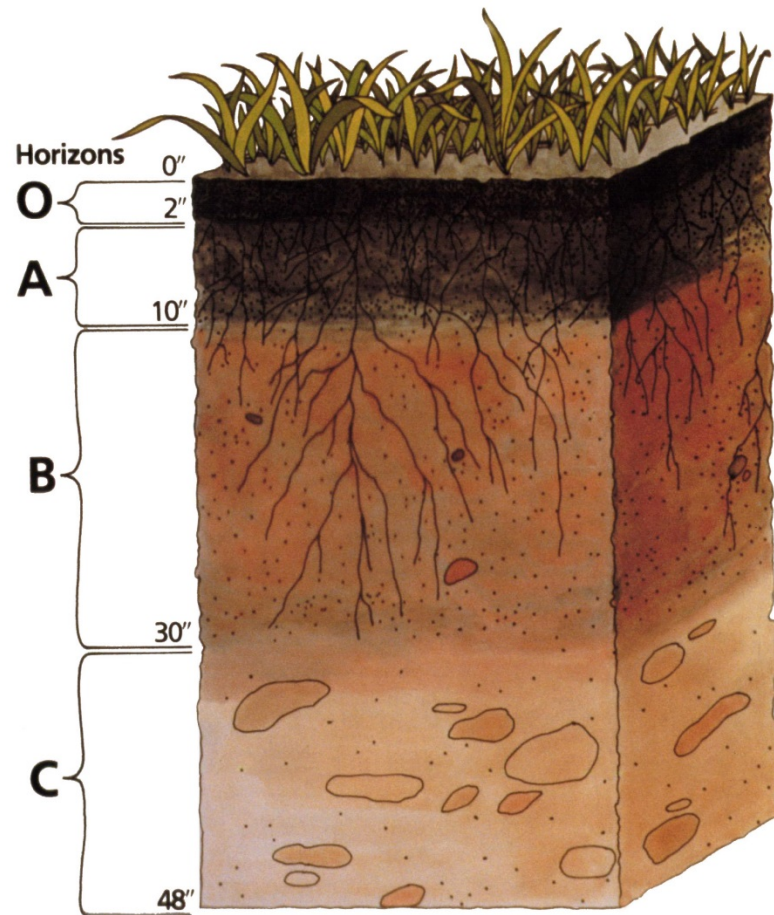


Organic layer near standing water.

5. Protection of groundwater supply; Soil profile



5. Protection of groundwater supply;



6. Protection of fisheries;



Ames Pond- Immediate Abutters in
Watershed: Stoughton, MA



Removal of anthropomorphic weed overgrowth helps fisheries. 17

7. Protection of land containing shellfish;

.



Fresh Water Mussels-filter
feeders

FWM depend of Fisheries in their life cycle and are an indicator of the ecological Health of the waterway.



8. Protection of wildlife habitat-



Male Box turtle measures up for protection.

8. Protection of Wildlife Habitat-Musk Turtle, Mallard mother and ducklings at Ames Pond.



8. Protection of wildlife habitat- cross cutting of the forest near wetlands is harmful to the ecology of a forest and the wetland and a violation of the law.





Previously shown.

Amphibian Egg masses surveyed from the water body suffering negative impact from an illicit discharge of polluted stormwater



Dead or dying egg masses.

Protection of wildlife habitat- Vernal Pool Habitat off Palisades Circle for *Ambystoma maculatum*, Yellow Spotted Salamander



Male and Female Salamanders in Late March.

Communal Egg masses of Yellow Spotted Salamanders- April 11, 2018



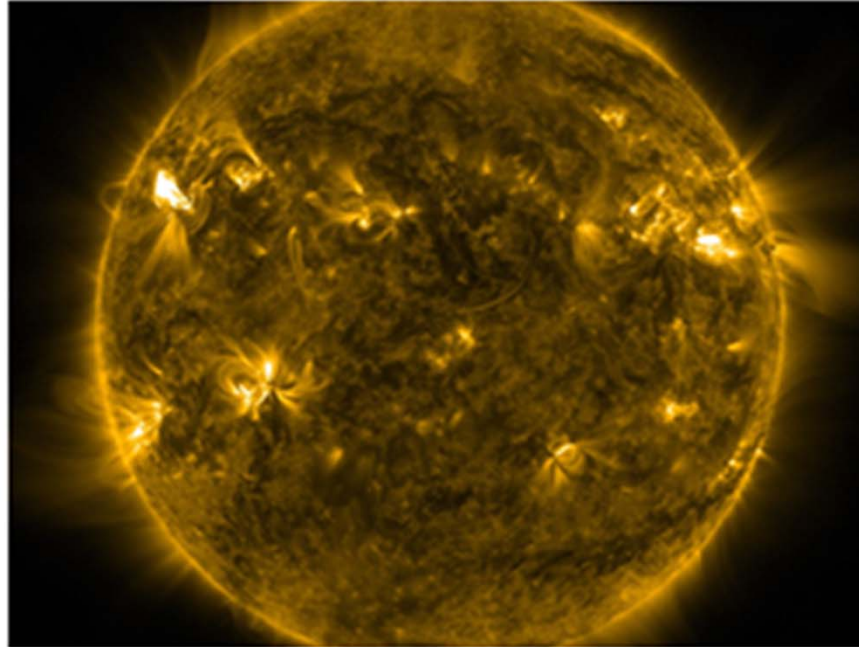
A Plethora of life!

Aggregate and solitary obligate amphibian egg masses in same vernal pool



Clear clean water!

Any Questions?



**James Conlon, MS, PWS, Environmental Affairs Officer
of the Town of Stoughton,**

Town Hall, Engineering Department, 2nd floor
10 Pearl Street, Stoughton, MA, (781) 341-1300 ext. 9262
jconlon@stoughton-ma.gov

Thank
you for your attention!